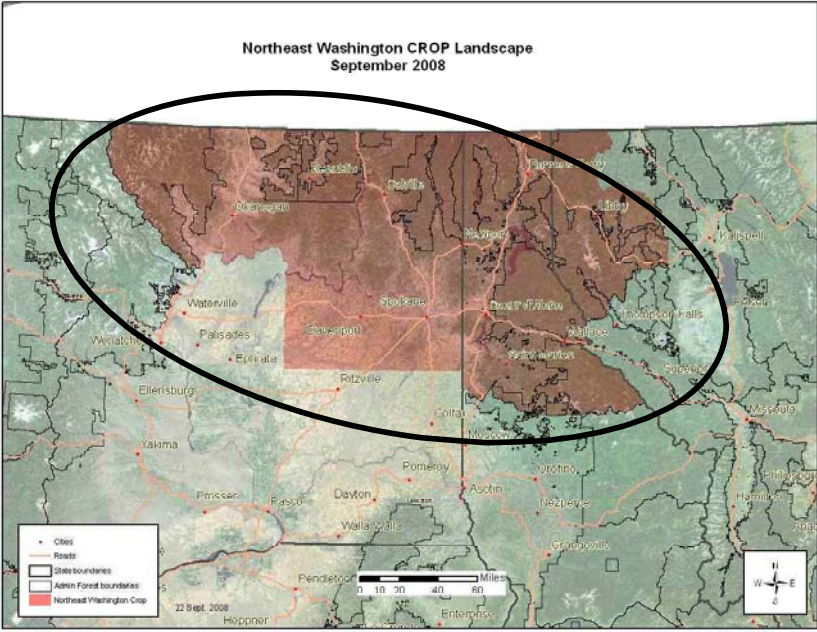


**NE Washington CROP**  
**A Summary of CROP Landscape Analyses Results**  
**(2009 – 2013)**

Total 5-yr Volumes: 1,333,429 = gT; S = 580.151 mmbf; L = 847.089 mmbf  
 (3% of total volume = dead)

- 4 National Forests (14 ranger districts)
- 2 BLM districts
- 3 State Land Offices (8 districts)
- 3 State Depts. of Transportation
- 3 State Parks Offices
- 1 Military Facility



gT = green tons (up to 7" dbh)  
 S = small log mmbf (>7"-12" dbh)  
 L = large log mmbf (>12" dbh)

<i>By Species</i>	5-yr total (Biomass = gT)	5-yr total Small log (mmbf)	5-yr total Large log (mmbf)
<b>Douglas fir</b> (36% of 5-yr. total)	341,765	228.131	317.592
<b>Engelmann spruce</b> (2% of 5-yr. total)	30,575	11.071	16.719
<b>Grand fir</b> (17% of 5-yr. total)	219,036	73.701	169.184
<b>Lodgepole pine</b> (13% of 5-yr. total)	183,658	122.244	54.372
<b>Mountain hemlock</b> (1% of 5-yr. total)	27,469	6.836	4.131
<b>Ponderosa pine</b> (6% of 5-yr. total)	66,411	24.258	57.97
<b>Subalpine fir</b> (1% of 5-yr. total)	10,972	6.747	7.529
<b>Western hemlock</b> (3% of 5-yr. total)	101,956	8.046	24.125
<b>Western larch</b> (11% of 5-yr. total)	130,512	60.469	92.872
<b>Western redcedar</b> (7% of 5-yr. total)	166,217	31.351	54.121
<b>Western white pine</b> (4% of 5-yr. total)	54,859	7.297	48.475

Colville NF: (gT = 126,350; Small log = 100.13 mmbf; Large log = 26.79 mmbf)

Ranger Districts	5-yr total (Biomass = gT)	5-yr total Small log (mmbf)	5-yr total Large log (mmbf)
Newport	47,525	42.43	6.7
Republic	16,700	12.99	5.3
Sullivan Lake	18,925	10.98	4.1
Three Rivers	43,200	33.73	10.69

Idaho Panhandle NF: (gT = 191,858; Small log = 121.501 mmbf; Large log = 90.128 mmbf)

Ranger Districts	5-yr total (Biomass = gT)	5-yr total Small log (mmbf)	5-yr total Large log (mmbf)
Bonnars Ferry	61,166	29.561	18.206
Coeur d'Alene	81,555	39.415	24.274
Priest Lake	6,389	9.483	9.24
Sandpoint	20,389	9.854	6.069
St. Joe	22,360	33.189	32.339

Kootenai NF: (gT = 38,458; Small log = 72.862 mmbf; Large log = 74.447 mmbf)

Ranger Districts	5-yr total (Biomass = gT)	5-yr total Small log (mmbf)	5-yr total Large log (mmbf)
Cabinet	9,925	18.803	19.212
Libby	9,925	18.803	19.212
Three Rivers	18,609	35.256	36.023

Okanogan NF: (gT = 95,000; Small log = 62.5 mmbf; Large log = 28.5 mmbf)

Ranger Districts	5-yr total (Biomass = gT)	5-yr total Small log (mmbf)	5-yr total Large log (mmbf)
Methow Valley	55,000	29.5	9.5
Tonasket	40,000	33	19

**BLM:** (*gT* = 2,520; *Small log* = 30.037 *mmbf*; *Large log* = 6.34 *mmbf*)

Agency	Field Office	5-yr total (Biomass = gT)	5-yr total Small log (mmbf)	5-yr total Large log (mmbf)
Idaho BLM	Coeur d'Alene	1,520	10.657	1.02
Oregon/ Washington BLM	Spokane	1,000	19.38	5.32

**Idaho Dept. Lands:** (*gT* = 817,843; *Small log* = 56.842 *mmbf*; *Large log* = 393.125 *mmbf*)

Supervisory Areas	5-yr total (Biomass = gT)	5-yr total Small log (mmbf)	5-yr total Large log (mmbf)
Cataldo	31,471	3.725	35.724
Kootenai Valley	71,300	1.496	23.504
Mica	28,100	2.797	22.203
Pend Oreille	98,700	12.023	52.977
Priest Lake	248,600	7.198	77.701
St. Joe	339,672	29.603	181.016

**Montana DNRC:** (*gT* = 0; *Small log* = 5.5 *mmbf*; *Large log* = 10.19 *mmbf*)

Land Office	5-yr total (Biomass = gT)	5-yr total Small log (mmbf)	5-yr total Large log (mmbf)
Northwestern	0	5.5	10.19

**Washington DNR:** (*gT* = 61,400; *Small log* = 130.78 *mmbf*; *Large log* = 217.57 *mmbf*)

Region	5-yr total (Biomass = gT)	5-yr total Small log (mmbf)	5-yr total Large log (mmbf)
Northeast	61,400	130.78	217.57

**Northeast Washington CROP: All Agencies offering/removal '09 – '13**  
**(gT = 1,333,429 / S = 580.151 mmbf / L = 847.089 mmbf)**  
**(1,693.926 total mmbf)**

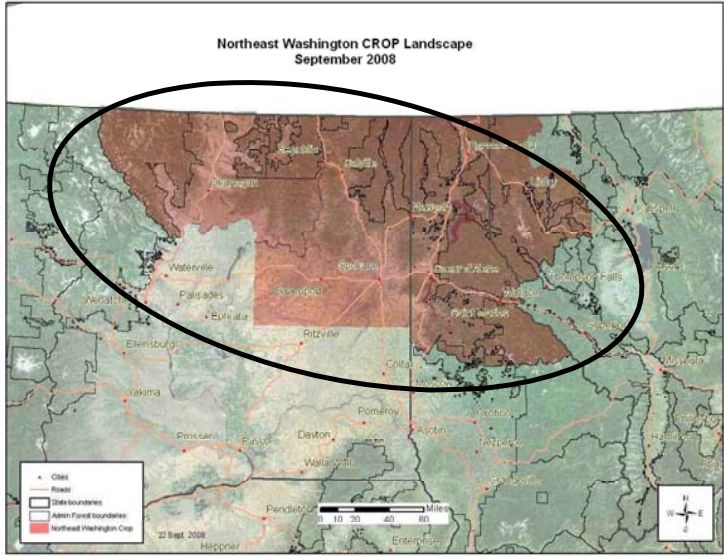
gT = green tons (up to 7" dbh)  
 S = small log mmbf (>7"-12" dbh)  
 L = large log mmbf (>12" dbh)

**Colville NF: 4 RDs – 9%**  
**(gT = 126,350 / S = 100.13 / L = 26.79)**

**Idaho Panhandle NF: 5 RDs – 15%**  
**(gT = 191,858 / S = 121.501 / L = 90.128)**

**Kootenai NF: 3 RDs – 9%**  
**(gT = 38,458 / S = 72.862 / L = 74.447)**

**Okanogan NF: 2 RDs – 6%**  
**(gT = 95,000 / S = 62.5 / L = 28.5)**



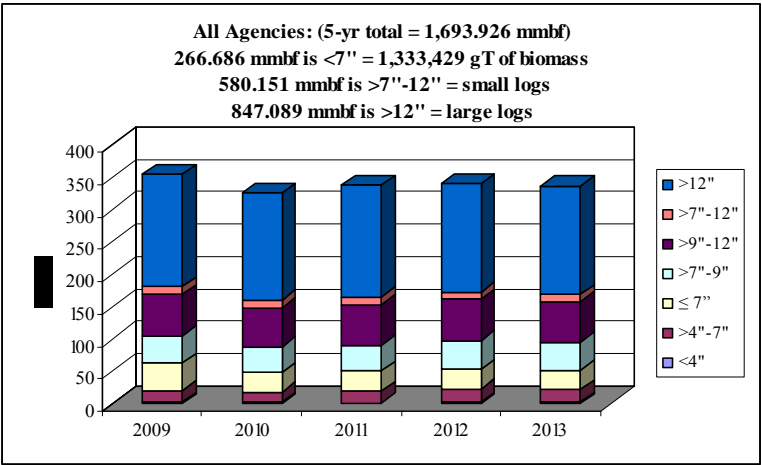
**Idaho BLM: 1 FO – 1%**  
**(gT = 1,520 / S = 10.657 / L = 1.02)**

**Washington/Oregon BLM: 1 FO – 1%**  
**(gT = 1,000 / S = 19.380 / L = 5.320)**

**Idaho Dept. of Lands: 6 SA – 36%**  
**(gT = 817,843 / S = 56.842 / L = 393.125)**

**Montana DNRC: 1 LO – 1%**  
**(gT = 0 / S = 5.5 / L = 10.19)**

**Washington DNR: 1 Region – 21%**  
**(gT = 61,400 / S = 130.78 / L = 217.57)**

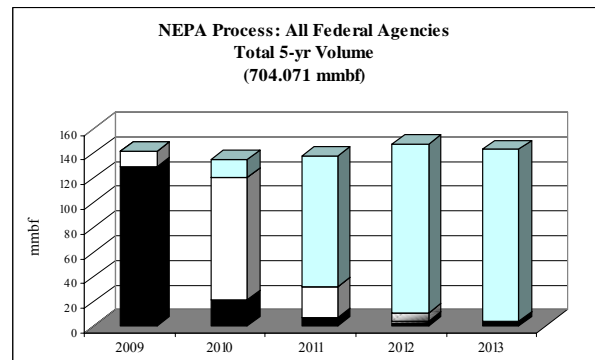
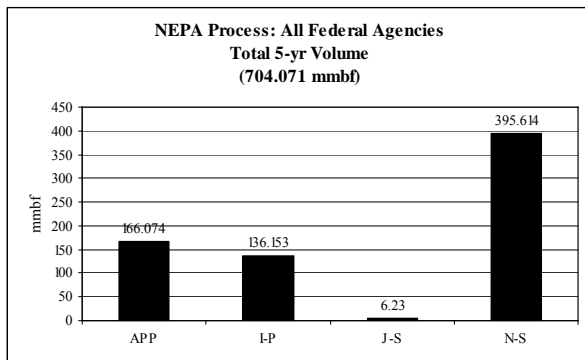


All species, all agencies	mmbf		
	Biomass	Small Log	Large Log
2009	313898.302	117.715814	174.289525
2010	243163.952	111.149801	165.855202
2011	249583.952	114.820021	172.794982
2012	266878.952	119.444321	166.855682
2013	259903.952	117.021021	167.293982
<b>Totals</b>	<b>1333429.11</b>	<b>580.15098</b>	<b>847.089372</b>
<b>%</b>	<b>16%</b>	<b>34%</b>	<b>50%</b>
<b>mmbf</b>	<b>266.685822</b>		

**1693.92617**

NEPA Process – All Federal Agencies: Total 5-yr volume (704.071 mmbf; includes gT as mmbf)

	<i>mmbf</i>	<i>% of total</i>
<i>Approved</i>	<b>166.074</b>	<b>24%</b>
<i>In process</i>	<b>136.153</b>	<b>19%</b>
<i>Just started</i>	<b>6.23</b>	<b>1%</b>
<i>Not started</i>	<b>395.614</b>	<b>56%</b>



**NE Washington CROP: All Agencies offering/removal '09 – '13**  
**(gT = 1,333,429 / S = 580.151 mmbf / L = 847.089 mmbf)**  
**(1,693.926 total mmbf)**

**BLM:**

- A Coeur d' Alene FO (ID) (gT = 1,520 / S = 10.357 / L = 1.02)
- B Spokane FO (OR/WA) (gT = 1,000 / S = 19.380 / L = 5.320)

**Colville NF:**

- C Newport RD (gT = 47,525 / S = 42.43 / L = 6.7)
- D Republic RD (gT = 16,700 / S = 12.99 / L = 5.3)
- E Sullivan Lake RD (gT = 18,925 / S = 10.98 / L = 4.1)
- F Three Rivers RD (gT = 43,200 / S = 33.73 / L = 10.69)

**Idaho Panhandle NF:**

- G Bonners Ferry RD (gT = 61,166 / S = 29.561 / L = 18.206)
- H Coeur d' Alene RD (gT = 81,555 / S = 39.415 / L = 24.274)
- I Priest Lake RD (gT = 6,389 / S = 9.483 / L = 9.240)
- J Sandpoint RD (gT = 20,389 / S = 9.854 / L = 6.069)
- K St. Joe RD (gT = 22,360 / S = 33.189 / L = 32.339)

**Kootenai NF:**

- L Cabinet RD (gT = 9,925 / S = 18.803 / L = 19.212)
- M Libby RD (gT = 9,925 / S = 18.803 / L = 19.212)
- N Three Rivers RD (gT = 18,609 / S = 35.256 / L = 36.023)

**Okanogan NF:**

- O Methow Valley RD (gT = 55,000 / S = 29.5 / L = 9.5)
- P Tonasket RD (gT = 40,000 / S = 33 / L = 19)

**Idaho Dept. of Lands:**

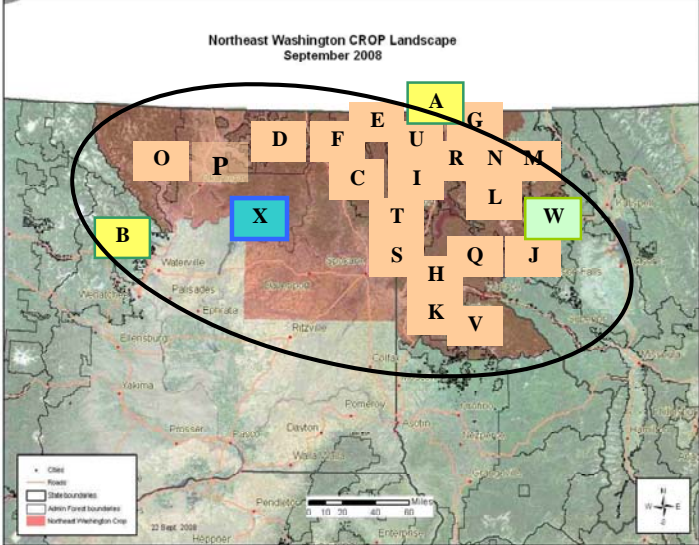
- Q Cataldo SA (gT = 31,471 / S = 3.725 / L = 35.724)
- R Kootenai Valley SA (gT = 71,300 / S = 1.496 / L = 23.504)
- S Mica SA (gT = 28,100 / S = 2.797 / L = 22.203)
- T Pend Oreille SA (gT = 19.74 / S = 12.023 / L = 52.977)
- U Priest Lake SA (gT = 248,600 / S = 7.198 / L = 77.701)
- V St. Joe SA (gT = 339,672 / S = 29.603 / L = 181.016)

**Montana DNRC:**

- W Libby Unit (Northwest Land Office) (gT = 0 / S = 5.5 / L = 10.19)

**WA DNR**

- X NE Region (gT = 61,400 / S = 130.78 / L = 217.57)



Note: CROP landscape follows agency boundaries identified in circle above.

**Northeast Washington CROP: *Douglas Fir* offering/removal '09 – '13**  
**(gT = 341,765 / S = 228.131 mmbf / L = 317.592 mmbf)**  
**(614.077 total mmbf)**

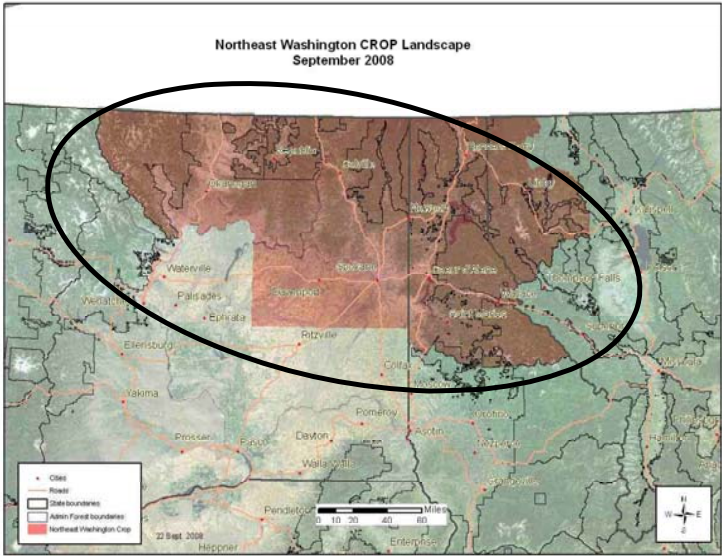
gT = green tons (up to 7" dbh)  
 S = small log mmbf (>7"-12" dbh)  
 L = large log mmbf (>12" dbh)

**Colville NF: 4 RDs – 9%**  
**(gT = 38,700 / S = 38.27 / L = 11.24)**

**Idaho Panhandle NF: 5 RDs – 16%**  
**(gT = 34,437 / S = 44.178 / L = 46.628)**

**Kootenai NF: 3 RDs – 10%**  
**(gT = 7,184 / S = 16.597 / L = 40.993)**

**Okanogan NF: 2 RDs – 14%**  
**(gT = 76,000 / S = 50 / L = 22.8)**

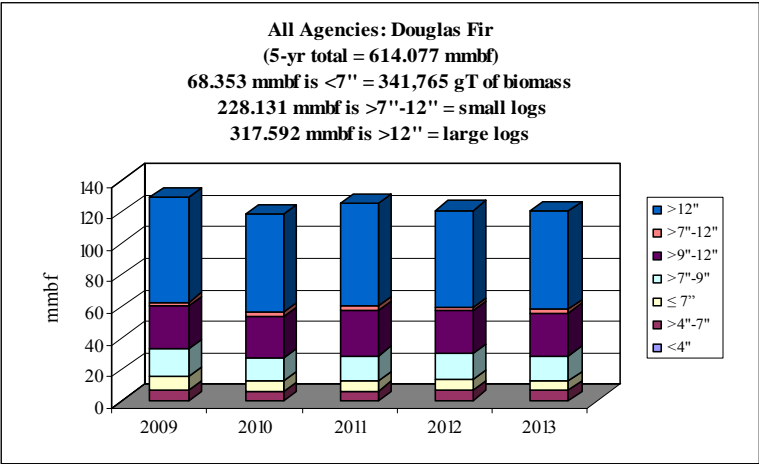


**Washington/Oregon BLM: 1 FO – 2%**  
**(gT = 1,000 / S = 8.271 / L = 3.379)**

**Idaho Dept. of Lands: 6 SA – 21%**  
**(gT = 175,738 / S = 11.767 / L = 82.227)**

**Montana DNRC: 1 LO – 1%**  
**(gT = 0 / S = 2.2 / L = 4.076)**

**Washington DNR: 1 Region – 26%**  
**(gT = 8,566 / S = 53.349 / L = 105.94)**



All Agencies	gT	mmbf	
Douglas-fir	Biomass	Small Log	Large Log
2009	80170.7952	46.7421777	66.0599394
2010	62352.8753	43.5990985	62.4731027
2011	64597.2014	47.0384993	65.4185328
2012	68820.5033	45.7020384	61.4732437
2013	65823.4683	45.0495416	62.1675872
<b>Totals</b>	<b>341764.843</b>	<b>228.131356</b>	<b>317.592406</b>
<b>%</b>	<b>11%</b>	<b>37%</b>	<b>52%</b>
<b>mmbf</b>	<b>68.3529687</b>		

**614.07673**

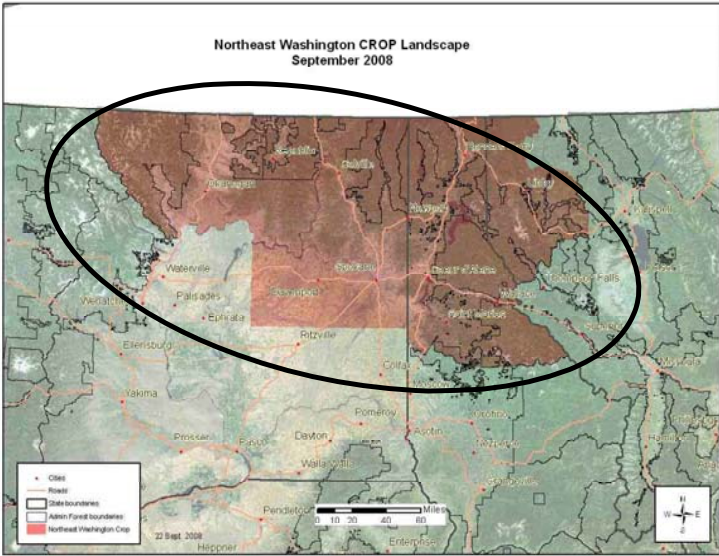
**Northeast Washington CROP: *Grand Fir* offering/removal '09 – '13**  
**(gT = 219,036 / S = 73.701 mmbf / L = 169.184 mmbf)**  
**(286.692 total mmbf)**

gT = green tons (up to 7" dbh)  
 S = small log mmbf (>7"-12" dbh)  
 L = large log mmbf (>12" dbh)

**Colville NF: 2 RDs – 3%**  
**(gT = 6,350 / S = 5.25 / L = 1.71)**

**Idaho Panhandle NF: 5 RDs – 20%**  
**(gT = 17,896 / S = 25.149 / L = 28.219)**

**Kootenai NF: 3 RDs – 4%**  
**(gT = 2,697 / S = 3.164 / L = 9.034)**



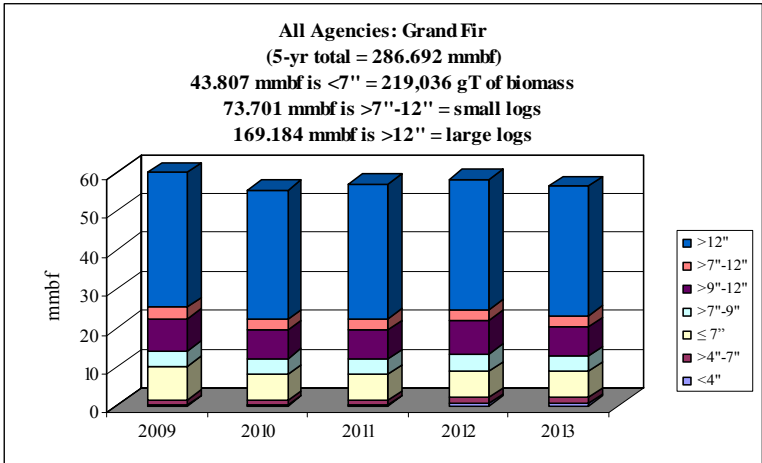
**Idaho BLM: 1 FO – 1%**  
**(gT = 145 / S = 2.67 / L = .475)**

**Washington/Oregon BLM: 1 FO – 2%**  
**(gT = 0 / S = 4.347 / L = 1.470)**

**Idaho Dept. of Lands: 6 SA – 50%**  
**(gT = 177,783 / S = 14.256 / L = 94.944)**

**Montana DNRC: 1 LO – <1%**  
**(gT = 0 / S = .22 / L = .4)**

**Washington DNR: 1 Region – 19%**  
**(gT = 14,166 / S = 18.645 / L = 32.932)**



All Agencies	gT	mmbf	
Grand fir	Biomass	Small Log	Large Log
2009	50967.3827	15.0991018	34.6470563
2010	40104.7795	14.1308462	33.1386007
2011	40205.7411	14.2543007	34.6581028
2012	43989.0103	15.8776637	33.4465796
2013	43769.2988	14.338938	33.2936994
<b>Totals</b>	<b>219036.212</b>	<b>73.7008505</b>	<b>169.184039</b>
%	15%	26%	59%
mmbf	43.8072425		

**286.692132**

**Northeast Washington CROP: *Lodgepole Pine* offering/removal '09 – '13**  
**(gT = 183,658 / S = 122,244 mmbf / L = 54.372 mmbf)**  
**(213.347 total mmbf)**

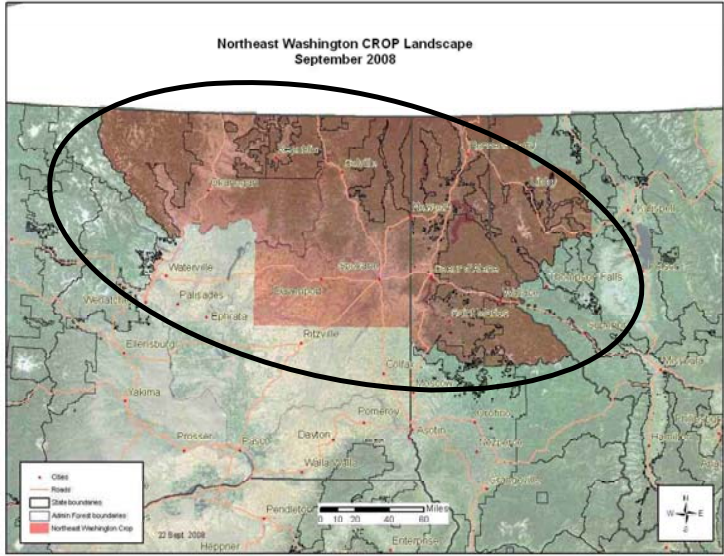
gT = green tons (up to 7" dbh)  
 S = small log mmbf (>7"-12" dbh)  
 L = large log mmbf (>12" dbh)

**Colville NF: 4 RDs – 25%**  
**(gT = 49,400 / S = 36.435 / L = 6.51)**

**Idaho Panhandle NF: 5 RDs – 11%**  
**(gT = 36,062 / S = 12.704 / L = 3.566)**

**Kootenai NF: 3 RDs – 27%**  
**(gT = 21,430 / S = 39.512 / L = 14.394)**

**Okanogan NF: 2 RDs – 3%**  
**(gT = 4,750 / S = 3.125 / L = 1.425)**



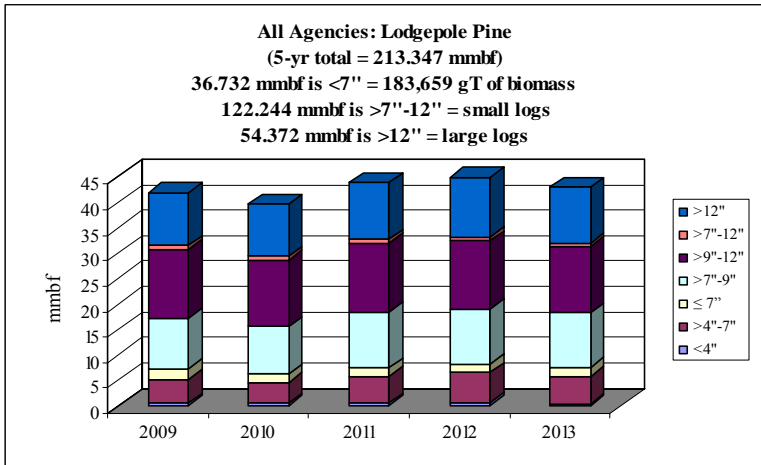
**Idaho BLM: 1 FO – 2%**  
**(gT = 855 / S = 3.178 / L = .12)**

**Washington/Oregon BLM: 1 FO – 1%**  
**(gT = 0 / S = 1.119 / L = 0)**

**Idaho Dept. of Lands: 6 SA – 17%**  
**(gT = 44,811 / S = 3.65 / L = 23.107)**

**Montana DNRC: 1 LO – <1%**  
**(gT = 0 / S = .275 / L = .5)**

**Washington DNR: 1 Region – 15%**  
**(gT = 26,350 / S = 22.246 / L = 4.751)**



All Agencies	gT	mmbf	
Lodgepole pine	Biomass	Small Log	Large Log
2009	36603.685	24.2034841	10.3586215
2010	31499.9435	23.1519633	10.1850988
2011	37004.9435	25.3903287	11.1338192
2012	40899.9435	25.0026545	11.701023
2013	37649.9435	24.4953072	10.9929661
<b>Totals</b>	<b>183658.459</b>	<b>122.243738</b>	<b>54.3715287</b>
%	17%	57%	25%
mmbf	36.7316918		

**213.346958**

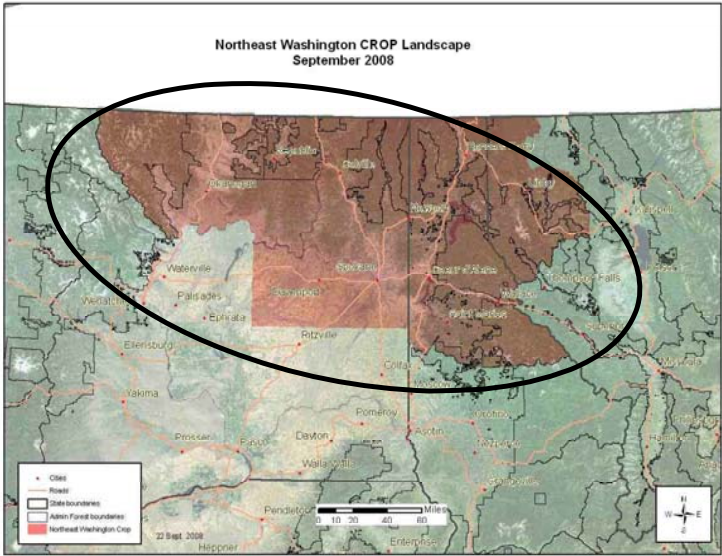
**Northeast Washington CROP: Western Larch offering/removal '09 – '13**  
**(gT = 130,512 / S = 60.469 mmbf / L = 92.872 mmbf)**  
**(179.443 total mmbf)**

gT = green tons (up to 7" dbh)  
 S = small log mmbf (>7"-12" dbh)  
 L = large log mmbf (>12" dbh)

**Colville NF: 4 RDs – 5%**  
**(gT = 4,900 / S = 6.265 / L = 2.38)**

**Idaho Panhandle NF: 5 RDs – 13%**  
**(gT = 36,497 / S = 15.846 / L = .636)**

**Kootenai NF: 3 RDs – 7%**  
**(gT = 3,196 / S = 8.039 / L = 3.224)**



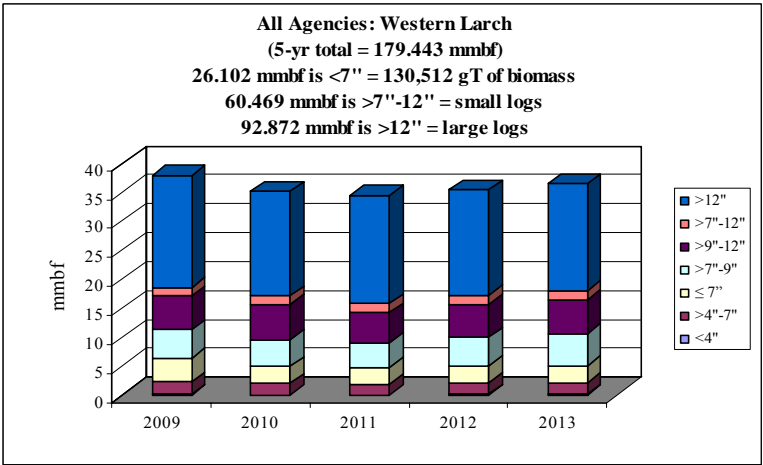
**Idaho BLM: 1 FO – <1%**  
**(gT = 325 / S = .79 / L = 0)**

**Washington/Oregon BLM: 1 FO – 3%**  
**(gT = 0 / S = 5.643 / L = .472)**

**Idaho Dept. of Lands: 6 SA – 44%**  
**(gT = 80,160 / S = 7.565 / L = 55.274)**

**Montana DNRC: 1 LO – 2%**  
**(gT = 0 / S = 1.1 / L = 2.076)**

**Washington DNR: 1 Reg – 25%**  
**(gT = 5,434 / S = 15.221 / L = 28.81)**



All Agencies	gT	mmbf	
Western larch	Biomass	Small Log	Large Log
2009	31999.0879	12.1914929	19.3403114
2010	24561.3217	12.1659561	18.081587
2011	23661.9955	10.9956753	18.788337
2012	25058.6937	12.1772363	18.1860261
2013	25230.7287	12.938333	18.4758826
<b>Totals</b>	<b>130511.828</b>	<b>60.4686935</b>	<b>92.8721441</b>
<b>%</b>	<b>15%</b>	<b>34%</b>	<b>52%</b>
<b>mmbf</b>	<b>26.1023655</b>		

**179.443203**

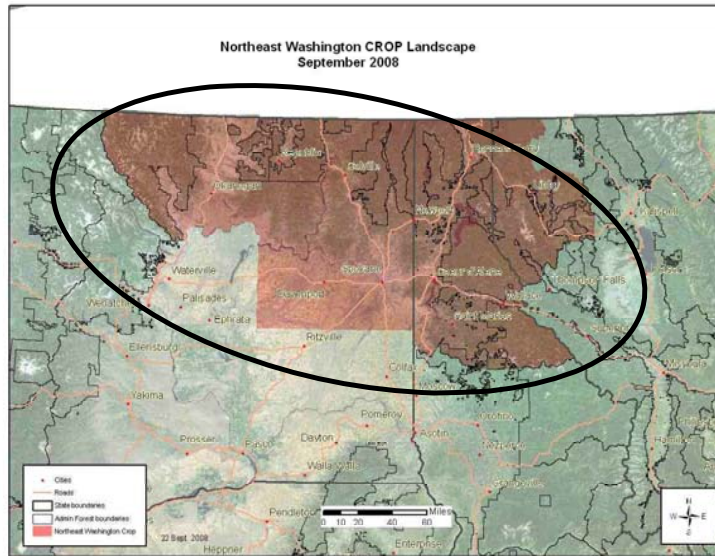
**Northeast Washington CROP: Western Redcedar offering/removal '09 – '13**  
**(gT = 166,217 / S = 31.351 mmbf / L = 54.121 mmbf)**  
**(118.716 total mmbf)**

gT = green tons (up to 7" dbh)  
 S = small log mmbf (>7"-12" dbh)  
 L = large log mmbf (>12" dbh)

**Colville NF: 4 RDs – 7%**  
**(gT = 16,650 / S = 4.21 / L = .96)**

**Idaho Panhandle NF: 5 RDs – 16%**  
**(gT = 22,589 / S = 11.987 / L = 2.339)**

**Kootenai NF: 3 RDs – 1%**  
**(gT = 0 / S = .189 / L = .535)**



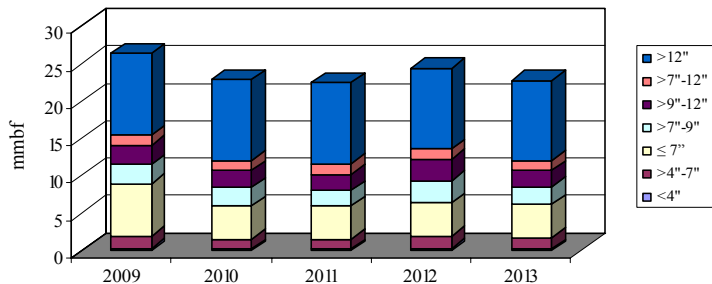
**Idaho BLM: 1 FO – <1%**  
**(gT = 50 / S = .07 / L = 0)**

**Idaho Dept. of Lands: 6 SA – 64%**  
**(gT = 124,128 / S = 6.735 / L = 44.447)**

**Montana DNRC: 1 LO – 1%**  
**(gT = 0 / S = .22 / L = .4)**

**Washington DNR: 1 Region – 12%**  
**(gT = 2,800 / S = 7.94 / L = 5.44)**

**All Agencies: Western Redcedar**  
**(5-yr total = 118.716 mmbf)**  
**33.243 mmbf is <7" = 166,217 gT of biomass**  
**31.351 mmbf is >7"-12" = small logs**  
**54.121 mmbf is >12" = large logs**



All Agencies	gT	mmbf	
Western redcedar	Biomass	Small Log	Large Log
2009	44858.5589	6.44024528	10.9244529
2010	29561.9938	6.1352733	10.771639
2011	29451.9938	5.6552733	10.831639
2012	31746.9938	7.2452733	10.811639
2013	30596.9938	5.8752733	10.781639
<b>Totals</b>	<b>166216.534</b>	<b>31.3513385</b>	<b>54.1210089</b>
%	28%	26%	46%
mmbf	33.2433068		

**118.715654**

**Northeast Washington CROP: *Ponderosa Pine* offering/removal '09 – '13**  
**(gT = 66,411 / S = 24,258 mmbf / L = 57.97 mmbf)**  
**(95.51 total mmbf)**

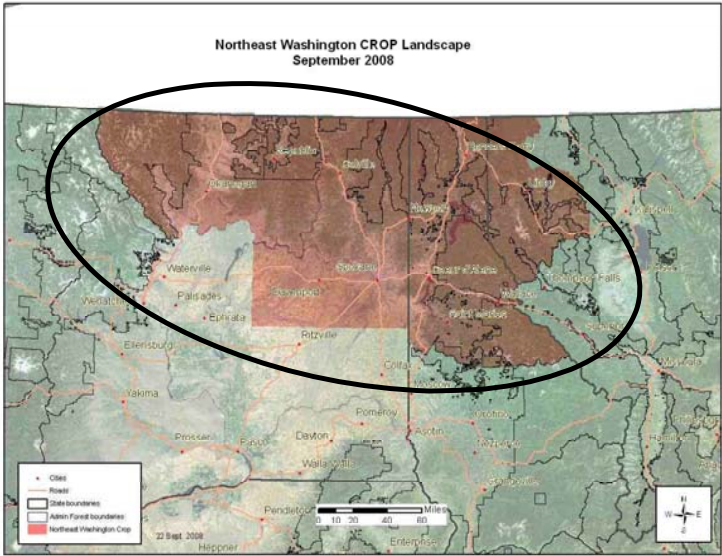
gT = green tons (up to 7" dbh)  
 S = small log mmbf (>7"-12" dbh)  
 L = large log mmbf (>12" dbh)

**Colville NF: 4 RDs – 12%**  
**(gT = 7,950 / S = 6.65 / L = 3.51)**

**Idaho Panhandle NF: 5 RDs – 4%**  
**(gT = 12,726 / S = .655 / L = .758)**

**Kootenai NF: 3 RDs – <1%**  
**(gT = 0 / S = .122 / L = .319)**

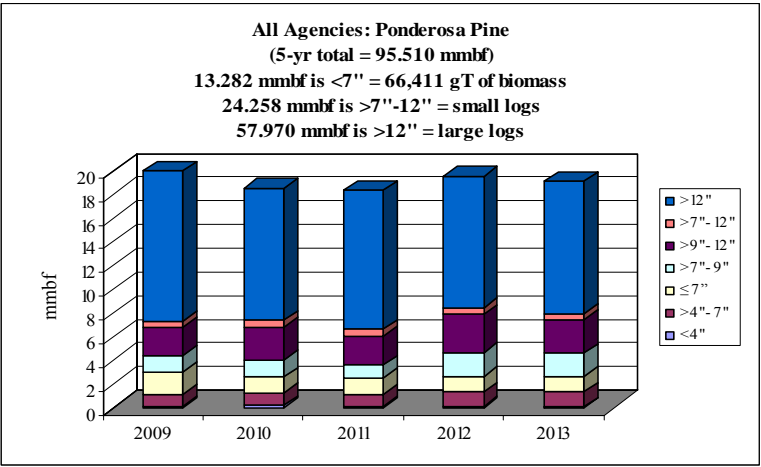
**Okanogan NF: 2 RDs – 12%**  
**(gT = 9,500 / S = 6.25 / L = 2.85)**



**Idaho Dept. of Lands: 6 SA – 29%**  
**(gT = 36,234 / S = 2.642 / L = 17.946)**

**Montana DNRC: 1 LO – 2%**  
**(gT = 0 / S = .825 / L = 1.538)**

**Washington DNR: 1 Region – 40%**  
**(gT = 0 / S = 7.114 / L = 31.049)**



All Agencies	gT	mmbf	
Ponderosa pine	Biomass	Small Log	Large Log
2009	15018.1275	4.31457008	12.6651197
2010	12891.8587	4.74681215	11.2192916
2011	12316.8587	4.11824677	11.7405712
2012	13116.8587	5.76912095	11.1633674
2013	13066.8587	5.30886822	11.1814243
<b>Totals</b>	<b>66410.5621</b>	<b>24.2576182</b>	<b>57.9697743</b>
%	14%	25%	61%
mmbf	13.2821124		

**95.5095048**

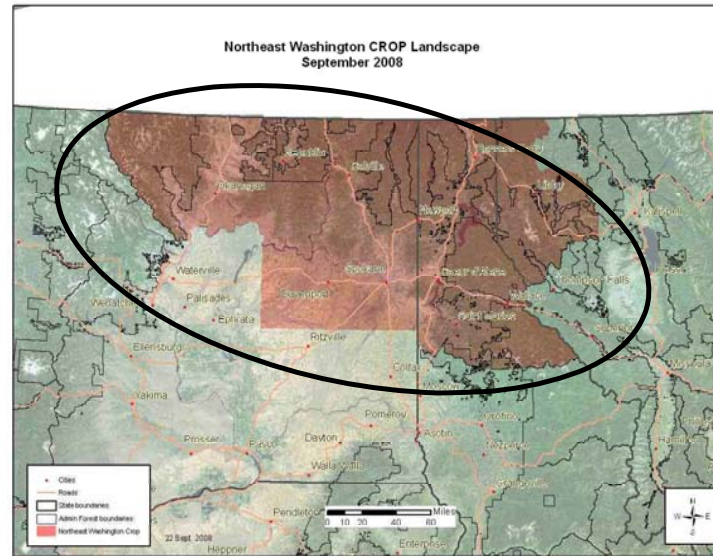
**Northeast Washington CROP: *Western White Pine* offering/removal '09 – '13**  
**(gT = 54,859 / S = 7.297 mmbf / L = 48.475 mmbf)**  
**(66.744 total mmbf)**

gT = green tons (up to 7" dbh)  
 S = small log mmbf (>7"-12" dbh)  
 L = large log mmbf (>12" dbh)

**Idaho BLM: 1 FO – <1%**  
**(gT = 0 / S = .05 / L = .05)**

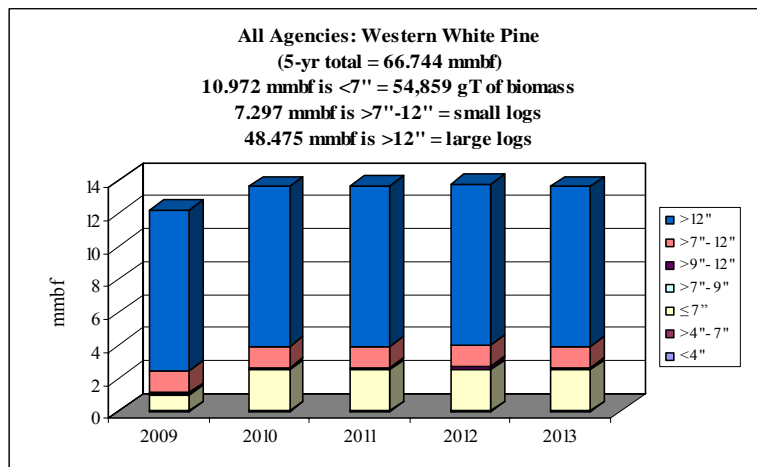
**Idaho Panhandle NF: 2 RDs – 2%**  
**(gT = 64 / S = .395 / L = 1.056)**

**Kootenai NF: 3 RDs – <1%**  
**(gT = 0 / S = .182 / L = .006)**



**Idaho Dept. of Lands: 6 SA – 95%**  
**(gT = 54,296 / S = 6.44 / L = 46.374)**

**Washington DNR: 1 Region – 2%**  
**(gT = 500 / S = .23 / L = .99)**



All Agencies	gT	mmbf	
Western white pine	Biomass	Small Log	Large Log
2009	4866.1563	1.46041206	9.72613246
2010	12498.2495	1.44156506	9.65982145
2011	12498.2495	1.44156506	9.69982145
2012	12498.2495	1.50156506	9.71982145
2013	12498.2495	1.45156506	9.66982145
<b>Totals</b>	<b>54859.1545</b>	<b>7.2966723</b>	<b>48.4754182</b>
<b>%</b>	<b>16%</b>	<b>11%</b>	<b>73%</b>
<b>mmbf</b>	<b>10.9718309</b>		

**66.7439214**

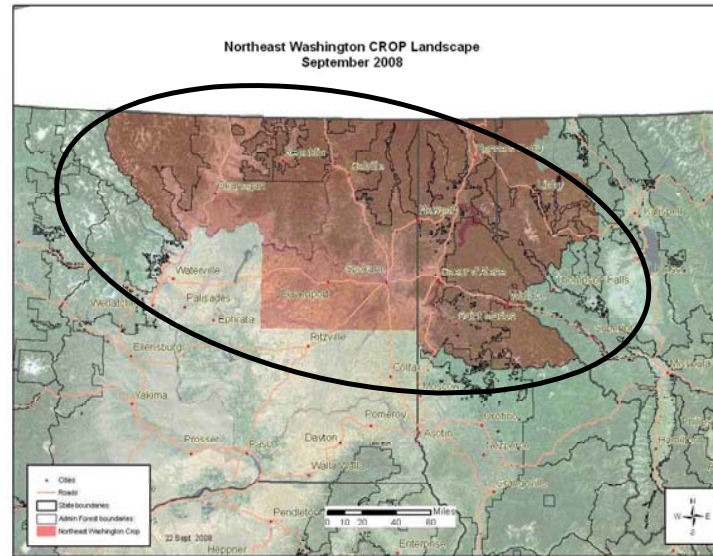
**Northeast Washington CROP: *Western Hemlock* offering/removal '09 – '13**  
**(gT = 101,956 / S = 8.046 mmbf / L = 24.125 mmbf)**  
**(52.562 total mmbf)**

gT = green tons (up to 7" dbh)  
 S = small log mmbf (>7"-12" dbh)  
 L = large log mmbf (>12" dbh)

**Idaho BLM: 1 FO – <1%**  
**(gT = 5 / S = 0 / L = 0)**

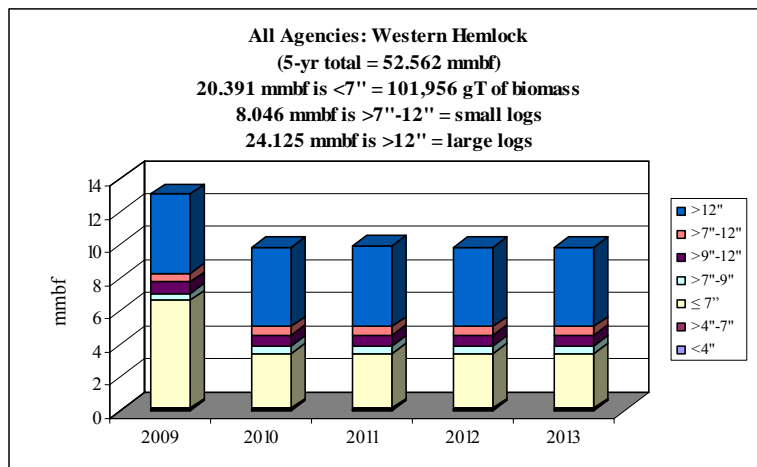
**Idaho Panhandle NF: 5 RDs – 12%**  
**(gT = 1,122 / S = 3.342 / L = 2.735)**

**Kootenai NF: 3 RDs – 2%**  
**(gT = 1,547 / S = .773 / L = .139)**



**Idaho Dept. of Lands: 6 SA – 79%**  
**(gT = 99,282 / S = 2.564 / L = 19.107)**

**Washington DNR: 1 Region – 7%**  
**(gT = 0 / S = 1.367 / L = 2.143)**



All Agencies	gT	mmbf	
Western hemlock	Biomass	Small Log	Large Log
2009	33122.3764	1.63009177	4.80780857
2010	17207.0527	1.60241582	4.79764327
2011	17212.0527	1.61961037	4.88107829
2012	17207.0527	1.59274352	4.81665378
2013	17207.0527	1.60134812	4.82140641
<b>Totals</b>	<b>101955.587</b>	<b>8.04620959</b>	<b>24.1245903</b>
%	39%	15%	46%
mmbf	20.3911174		

**52.5619173**

**Northeast Washington CROP: *Engelmann Spruce* offering/removal '09 – '13**  
**(gT = 30,575 / S = 11.071 mmbf / L = 16.719 mmbf)**  
**(33.905 total mmbf)**

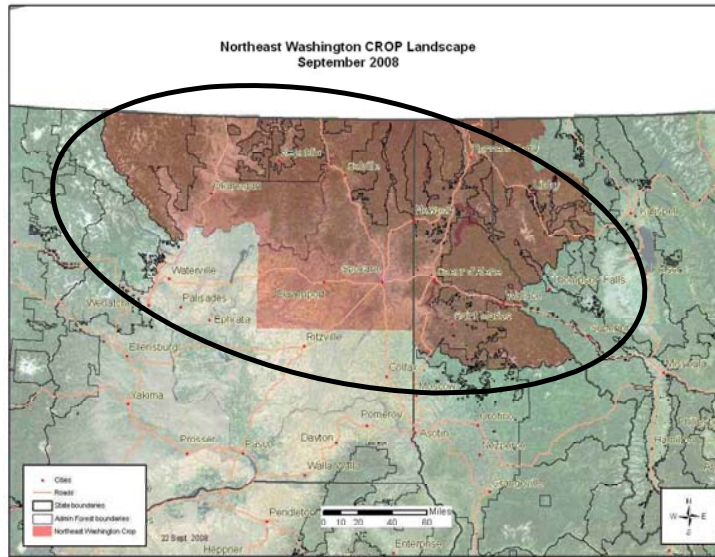
gT = green tons (up to 7" dbh)  
 S = small log mmbf (>7"-12" dbh)  
 L = large log mmbf (>12" dbh)

**Colville NF: 1 RD – 2%**  
**(gT = 350 / S = .39 / L = .15)**

**Idaho Panhandle NF: 5 RDs – 5%**  
**(gT = 2,996 / S = .245 / L = .853)**

**Kootenai NF: 3 RDs – 16%**  
**(gT = 1,011 / S = 2.236 / L = 3.09)**

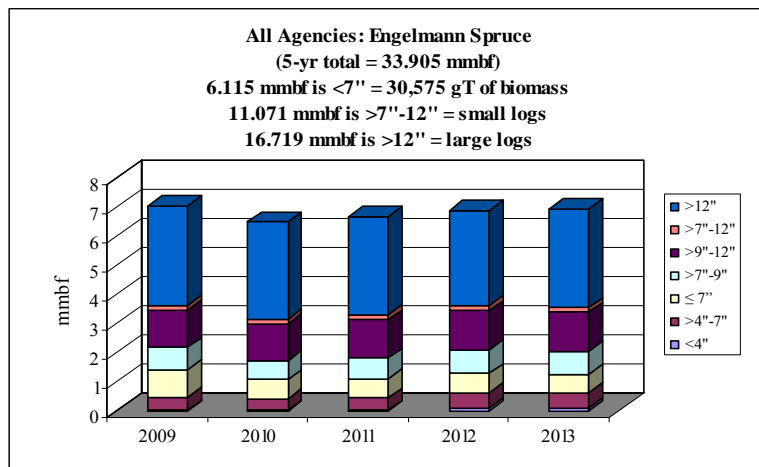
**Okanogan NF: 2 RDs – 16%**  
**(gT = 4,750 / S = 3.125 / L = 1.425)**



**Idaho Dept. of Lands: 6 SA – 33%**  
**(gT = 17,883 / S = .875 / L = 6.854)**

**Montana DNRC: 1 LO – 4%**  
**(gT = 0 / S = .44 / L = .8)**

**Washington DNR: 1 Region – 24%**  
**(gT = 3,584 / S = 3.760 / L = 3.548)**



All Agencies	Engelmann spruce		
	gT	mmbf	
	Biomass	Small Log	Large Log
2009	7062.45921	2.20312565	3.41218098
2010	5333.02323	2.07813647	3.31196607
2011	5482.06169	2.19458773	3.35007938
2012	6388.79246	2.32176683	3.26343492
2013	6308.504	2.27359896	3.38130214
<b>Totals</b>	<b>30574.8406</b>	<b>11.0712156</b>	<b>16.7189635</b>
<b>%</b>	<b>18%</b>	<b>33%</b>	<b>49%</b>
<b>mmbf</b>	<b>6.11496812</b>		

**33.9051472**

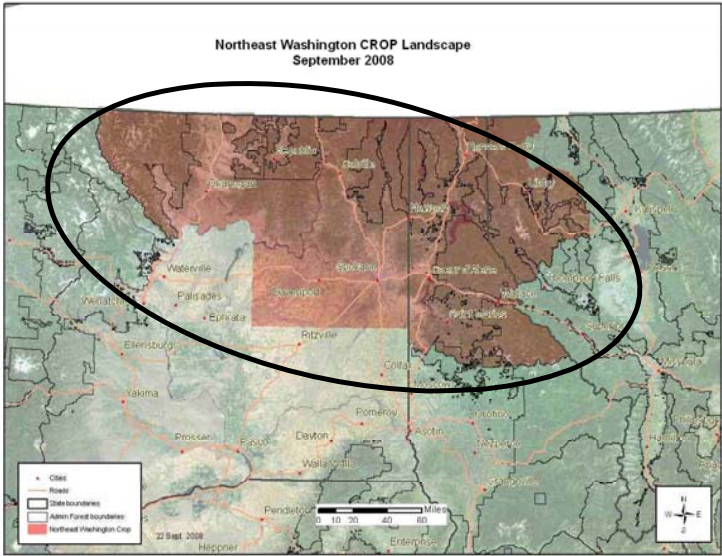
**Northeast Washington CROP: Subalpine Fir offering/removal '09 - '13**  
**(gT = 10,972 / S = 6.747 mmbf / L = 7.529 mmbf)**  
**(16.47 total mmbf)**

gT = green tons (up to 7" dbh)  
 S = small log mmbf (>7"-12" dbh)  
 L = large log mmbf (>12" dbh)

**Colville NF: 2 RDs - 21%**  
**(gT = 2,050 / S = 2.66 / L = .33)**

**Idaho Panhandle NF: 3 RDs - 3%**  
**(gT = 0 / S = .486 / L = 0)**

**Kootenai NF: 3 RDs - 24%**  
**(gT = 1,393 / S = 1.726 / L = 1.922)**

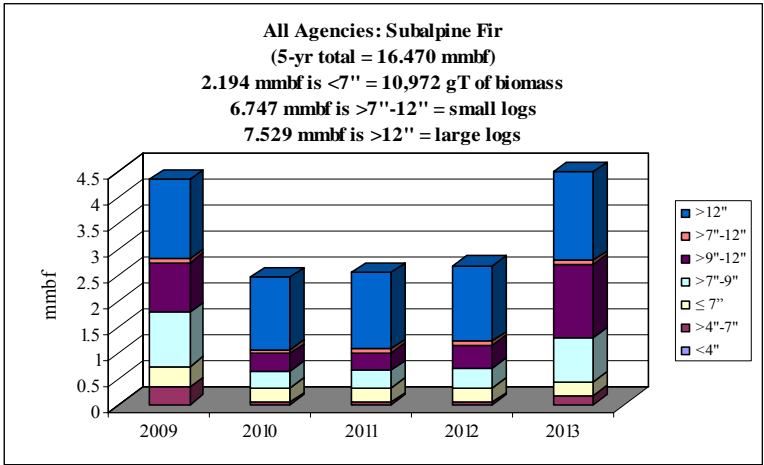


**Idaho BLM: 1 FO - 3%**  
**(gT = 0 / S = .4 / L = .065)**

**Idaho Dept. of Lands: 6 SA - 29%**  
**(gT = 7,528 / S = .348 / L = 2.845)**

**Montana DNRC: 1 LO - 4%**  
**(gT = 0 / S = .22 / L = .4)**

**Washington DNR: 1 Region - 17%**  
**(gT = 0 / S = .907 / L = 1.967)**



All Agencies	gT	mmbf	
Subalpine fir	Biomass	Small Log	Large Log
2009	3735.83702	2.06383257	1.52170372
2010	1659.01767	0.73045416	1.39025242
2011	1659.01767	0.74465387	1.46680202
2012	1659.01767	0.88697859	1.4476941
2013	2259.01767	2.3209676	1.70205452
<b>Totals</b>	<b>10971.9077</b>	<b>6.74688679</b>	<b>7.52850677</b>
%	13%	41%	46%
mmbf	2.19438154		

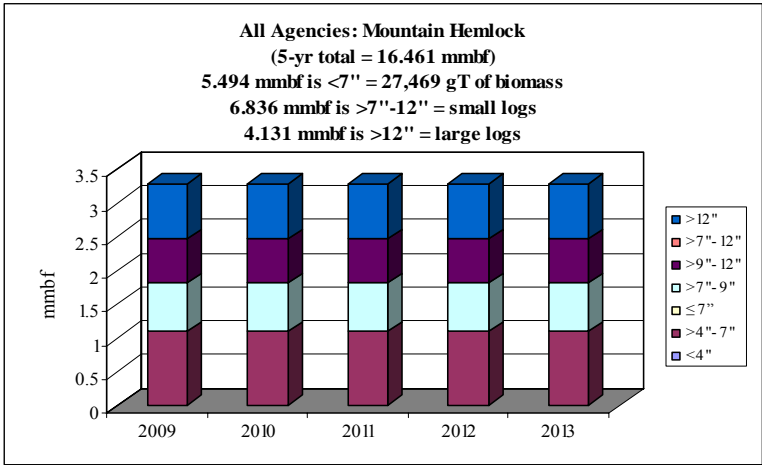
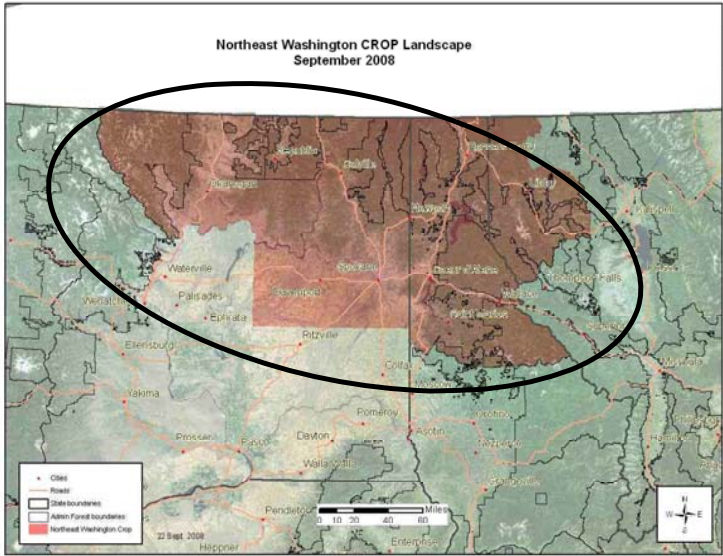
**16.4697751**

**Northeast Washington CROP: *Mountain Hemlock* offering/removal '09 – '13**  
**(gT = 27,469 / S = 6.836 mmbf / L = 4.131 mmbf)**  
**(16.461 total mmbf)**

gT = green tons (up to 7" dbh)  
 S = small log mmbf (>7"-12" dbh)  
 L = large log mmbf (>12" dbh)

**Idaho Panhandle NF: 3 RDs – 93%**  
**(gT = 27,469 / S = 6.514 / L = 3.339)**

**Kootenai NF: 3 RDs – 7%**  
**(gT = 0 / S = .322 / L = .792)**



All Agencies	gT	mmbf	
Mountain hemlock	Biomass	Small Log	Large Log
2009	5493.8361	1.36728027	0.82619861
2010	5493.8361	1.36728027	0.82619861
2011	5493.8361	1.36728027	0.82619861
2012	5493.8361	1.36728027	0.82619861
2013	5493.8361	1.36728027	0.82619861
<b>Totals</b>	<b>27469.1805</b>	<b>6.83640134</b>	<b>4.13099304</b>
%	33%	42%	25%
mmbf	5.4938361		

**16.4612305**

*For more information contact:*

**Catherine M. Mater:**

President—Mater Ltd.

136 SW Washington Avenue; Suite 201

Corvallis, Oregon; 97333

tel: (541) 753-7335 fax: (541) 752-2952

*E-mail: catherine@mater.com*

**Edmund Gee:**

Nat'l Woody Biomass Utilization Team Leader

Nat'l Partnership Coordinator USFS

Washington DC

tel: (202) 205-1787 fax: (202) 205-1045

cell: (202) 236-5153

*E-mail: eagee@fs.fed.us*