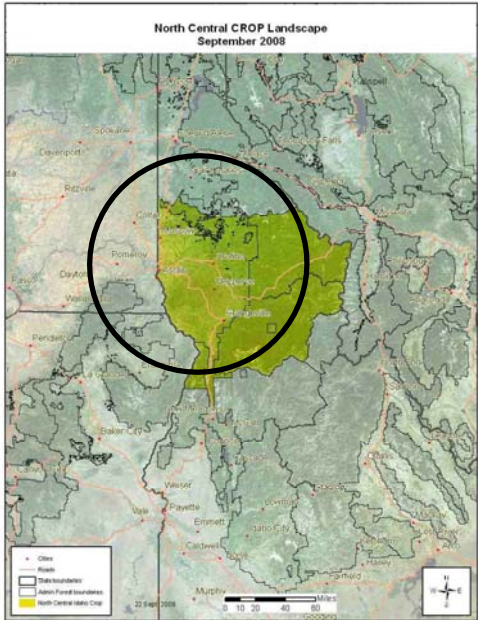


North Central Idaho CROP
A Summary of CROP Landscape Analyses Results
(2009 – 2013)

Total 5-yr Volumes: gT = 267,830; S = 81.61 mmbf; L = 524.01 mmbf
 (1% of total volume = dead)

- 2 National Forests (8 ranger districts)
- 1 State
- 1 BLM district
- 4 Idaho Dept. of Lands Supervisory Areas



gT = green tons (up to 7" dbh)
 S = small log mmbf (>7"-12" dbh)
 L = large log mmbf (>12" dbh)

<i>By Species</i>	5-yr total (Biomass = gT)	5-yr total Small log (mmbf)	5-yr total Large log (mmbf)
Grand fir (42% of 5-yr. total)	118,686	26.144	229.181
Douglas fir (25% of 5-yr. total)	60,804	22.584	128.028
Western redcedar (10% of 5-yr. total)	34,497	4.364	54.781
Western larch (9% of 5-yr. total)	11,839	8.905	51.005
Ponderosa pine (5% of 5-yr. total)	11,512	4.482	28.349
Lodgepole pine (5% of 5-yr. total)	23,342	13.851	12.541
Subalpine fir (1% of 5-yr. total)	1,208	.526	8.800
Western white pine (1% of 5-yr. total)	2,780	.508	6.514
Engelmann spruce (1% of 5-yr. total)	3,145	.247	4.643
Western hemlock (<1% of 5-yr. total)	18	.007	.174

Clearwater NF: (gT = 7,688; Small log = 35.012 mmbf; Large log = 78.351 mmbf)

Ranger Districts	5-yr total (Biomass = gT)	5-yr total Small log (mmbf)	5-yr total Large log (mmbf)
Lochsa	1,015	5.087	33.610
North Fork	287.110	1.439	9.504
Palouse	6,242	27.767	30.485
Powell	143.555	.719	4.752

Nez Perce NF: (gT = 10,482; Small log = 15.976 mmbf; Large log = 41.927 mmbf)

Ranger Districts	5-yr total (Biomass = gT)	5-yr total Small log (mmbf)	5-yr total Large log (mmbf)
Clearwater	5,241	7.988	20.964
Moose Creek*	0	0	0
Red River	5,241	7.988	20.964
Salmon River*	0	0	0

** Note: Moose Creek & Salmon RDs will have volumes at a later date.*

Idaho Dept. of Lands: (gT = 221,460; Small log = 20.511 mmbf; Large log = 398.186 mmbf)

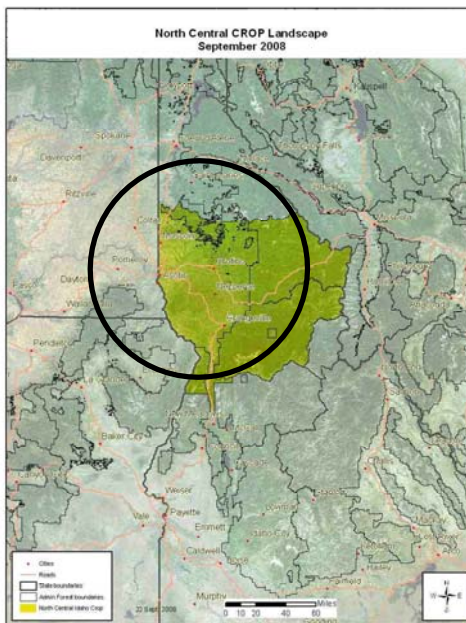
Supervisory Areas	5-yr total (Biomass = gT)	5-yr total Small log (mmbf)	5-yr total Large log (mmbf)
Clearwater	158,300	8.297	156.703
Craig Mtn.	8,100	1.097	18.403
Maggie Creek	41,880	5.630	95.567
Ponderosa	13,180	5.488	127.513

Idaho BLM: (gT = 28,199; Small log = 10.119 mmbf; Large log = 5.553 mmbf)

BLM Field Office	5-yr total (Biomass = gT)	5-yr total Small log (mmbf)	5-yr total Large log (mmbf)
Cottonwood	28,199	10.119	5.553

North Central Idaho CROP: *All Agencies* offering/removal '09 – '13
(gT = 267,830 / S = 81.618 mmbf / L = 524.017 mmbf)
(659.202 total mmbf)

gT = green tons (up to 7" dbh)
 S = small log mmbf (>7"-12" dbh)
 L = large log mmbf (>12" dbh)

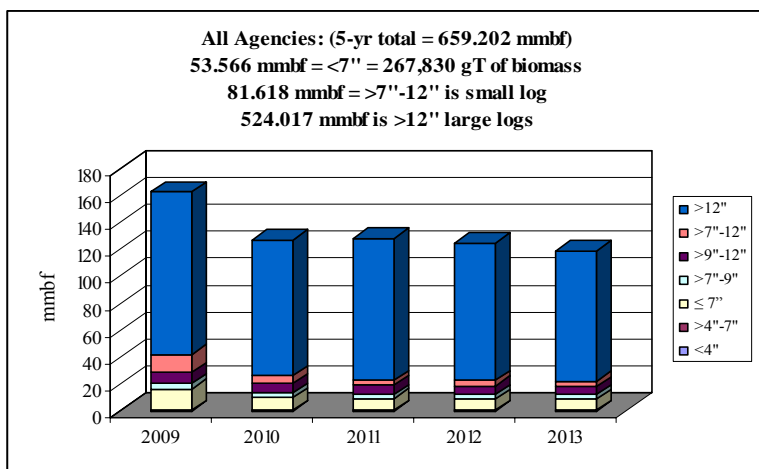


Clearwater NF: 4 RDs – 17%
(gT = 7,688 / S = 35.012 / L = 78.350)

Idaho BLM: 1 FO – 3%
(gT = 28,199 / S = 10.119 / L = 5.553)

Nez Perce NF: 2 RDs – 9%
(gT = 10,482 / S = 15.976 / L = 41.927)

Idaho Dept. of Lands: 4 SAs – 70%
(gT = 221,460 / S = 20.511 / L = 398.186)

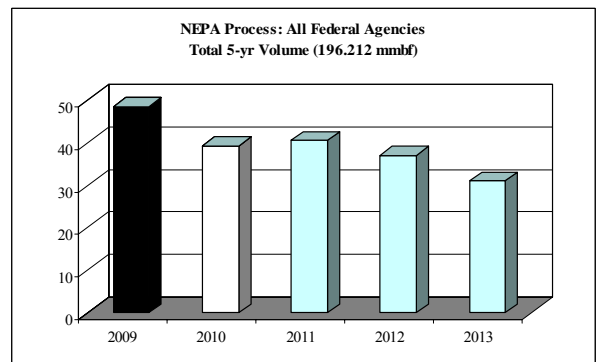
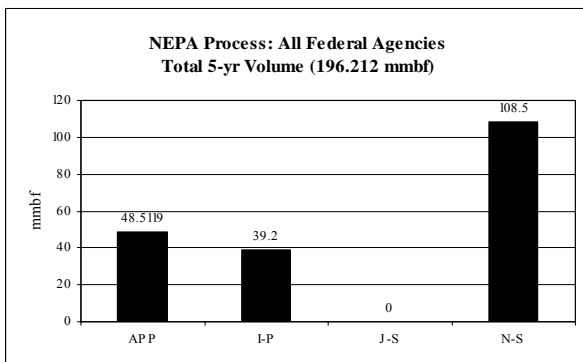


All species, all agencies	gT	mmbf	
	Biomass	Small Log	Large Log
2009	82104.7991	25.4947297	120.24351
2010	50356.9123	16.1099704	100.365248
2011	45209.6746	13.7926595	104.997307
2012	45118.3214	13.3349276	101.973309
2013	45040.5282	12.8861294	96.437666
Totals	267830.236	81.6184166	524.01704
%	8%	12%	79%
mmbf	53.5660471		

659.201504

NEPA Process – All Federal Agencies: Total 5-yr volume (196.212 mmbf; includes gT as mmbf)

	<i>mmbf</i>	<i>% of total</i>
<i>Approved</i>	48.512	25%
<i>In process</i>	39.2	20%
<i>Just started</i>	0	0%
<i>Not started</i>	108.5	55%



**North Central Idaho CROP: All Agencies offering/removal '09 – '13
(gT = 267,830 / S = 81.618 mmbf / L = 524.017 mmbf)
(659.202 total mmbf)**

Idaho BLM:

A Cottonwood FO ($gT = 28,199 / S = 10.119 / L = 5.553$)

Clearwater NF:

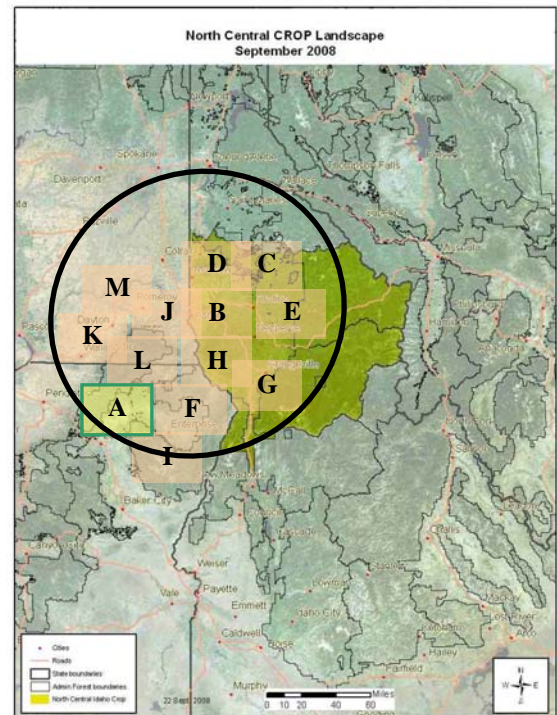
B Lochsa RD ($gT = 1,015 / S = 5.087 / L = 33.609$)
 C North Fork RD ($gT = 287 / S = 1.439 / L = 9.504$)
 D Palouse RD ($gT = 6,242 / S = 27.767 / L = 30.485$)
 E Powell RD ($gT = 144 / S = .719 / L = 4.752$)

Nez Perce NF:

F Clearwater RD ($gT = 5,241 / S = 7.988 / L = 20.964$)
 G Red River RD ($gT = 5,241 / S = 7.988 / L = 20.964$)
 H Moose Creek RD ($gT = 0 / S = 0 / L = 0$)
 I Salmon River RD RD ($gT = 0 / S = 0 / L = 0$)

IDL NF:

J Clearwater SA ($gT = 158,300 / S = 8.297 / L = 156.703$)
 K Craig Mountain SA ($gT = 8,100 / S = 1.097 / L = 18.403$)
 L Maggie Creek SA ($gT = 41,880 / S = 5.630 / L = 95.567$)
 M Ponderosa SA ($gT = 13,180 / S = 5.488 / L = 127.513$)



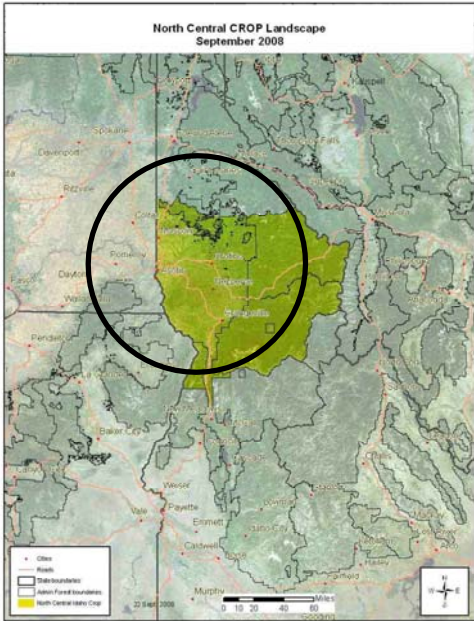
Note: CROP landscape follows agency boundaries identified in circle above.

North Central Idaho CROP: *Grand Fir* offering/removal '09 – '13
(gT = 118,686 / S = 26.144 mmbf / L = 229.181 mmbf)
(279.062 total mmbf)

gT = green tons (up to 7" dbh)
 S = small log mmbf (>7"-12" dbh)
 L = large log mmbf (>12" dbh)

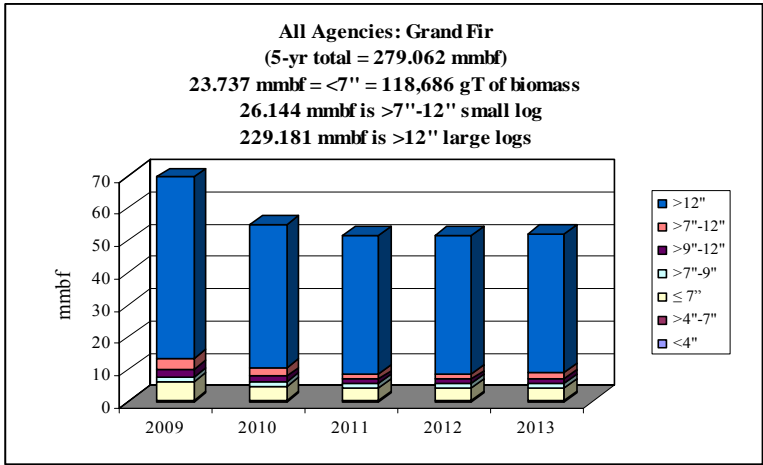
Clearwater NF: 1 RD – 7%
(gT = 2,135 / S = 8.486 / L = 10.781)

Nez Perce NF: 2 RDs – 11%
(gT = 5,259 / S = 5.954 / L = 22.323)



Idaho BLM: 1 FO – 2%
(gT = 3,718 / S = 1.743 / L = 1.751)

Idaho Dept. of Lands: 4 SAs – 81%
(gT = 107,574 / S = 9.961 / L = 194.326)



All Agencies	gT	mmbf	
Grand fir	Biomass	Small Log	Large Log
2009	29799.0442	7.2287921	56.2596531
2010	23987.9456	5.74004622	44.3332708
2011	21621.0495	4.34411238	42.8023387
2012	21621.0495	4.34411238	42.8023387
2013	21656.939	4.48674072	42.983536
Totals	118686.028	26.1438038	229.181137
%	9%	9%	82%
mmbf	23.7372056		

279.062147

North Central Idaho CROP: *Douglas Fir* offering/removal '09 – '13
(gT = 60,804 / S = 22,584 mmbf / L = 128.028 mmbf)
(162.773 total mmbf)

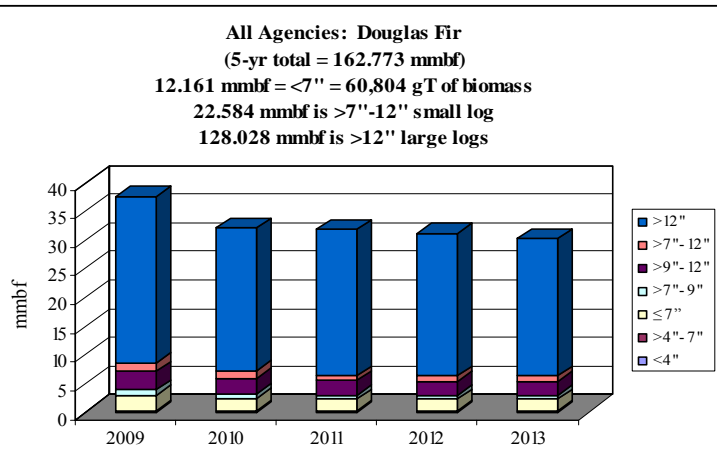
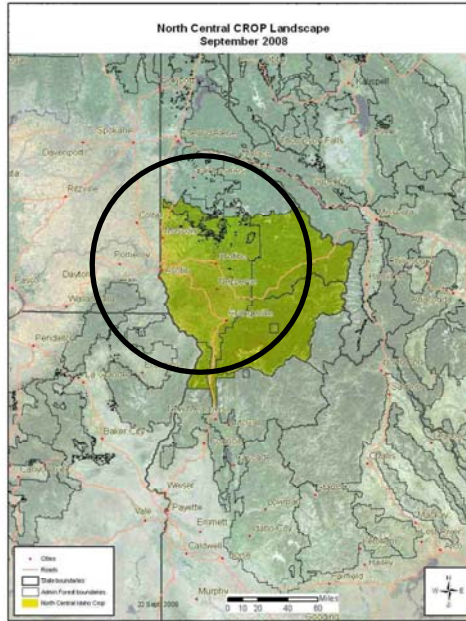
gT = green tons (up to 7" dbh)
 S = small log mmbf (>7"-12" dbh)
 L = large log mmbf (>12" dbh)

Clearwater NF: 4 RDs – 17%
(gT = 1,386 / S = 9,118 / L = 17.647)

Nez Perce NF: 2 RDs – 16%
(gT = 5,018 / S = 7,942 / L = 16.726)

Idaho BLM: 1 FO – 1%
(gT = 1,593 / S = .747 / L = .75)

Idaho Dept. of Lands: 4 SAs – 66%
(gT = 52,807 / S = 4.778 / L = 92.905)



All Agencies	Douglas-fir		
	gT	mmbf	
	Biomass	Small Log	Large Log
2009	14920.708	5.6368889	28.9206591
2010	12235.5348	4.75932865	24.8563883
2011	11217.7979	4.12665002	25.4615855
2012	11210.9561	4.04574466	24.8919897
2013	11218.7499	4.0156566	23.8978576
Totals	60803.7466	22.5842688	128.02848
%	7%	14%	79%
mmbf	12.1607493		

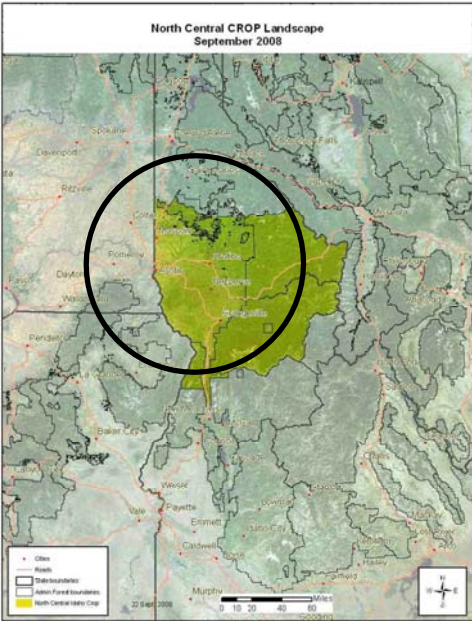
162.773498

North Central Idaho CROP: *Western Redcedar* offering/removal '09 – '13
(gT = 34,497 / S = 4,364 mmbf / L = 54.781 mmbf)
(66.045 total mmbf)

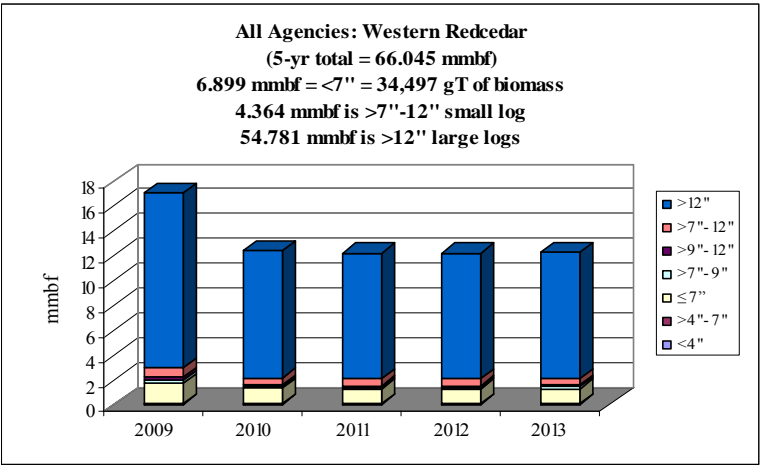
gT = green tons (up to 7" dbh)
 S = small log mmbf (>7"-12" dbh)
 L = large log mmbf (>12" dbh)

Clearwater NF: 1 RD – 4%
(gT = 1,245 / S = 1.2 / L = 1.447)

Nez Perce NF: 2 RDs – 2%
(gT = 0 / S = .389 / L = .612)



Idaho Dept. of Lands: 3 SAs – 94%
(gT = 33,251 / S = 2.776 / L = 52.723)



All Agencies	gT	mmbf	
Western redcedar	Biomass	Small Log	Large Log
2009	8759.58682	1.18887718	14.119449
2010	6483.95155	0.84175762	10.2232161
2011	6410.70097	0.77116666	10.1381074
2012	6410.70097	0.77116666	10.1381074
2013	6431.62971	0.7913355	10.1624241
Totals	34496.57	4.36430362	54.7813039
%	10%	7%	83%
mmbf	6.899314		

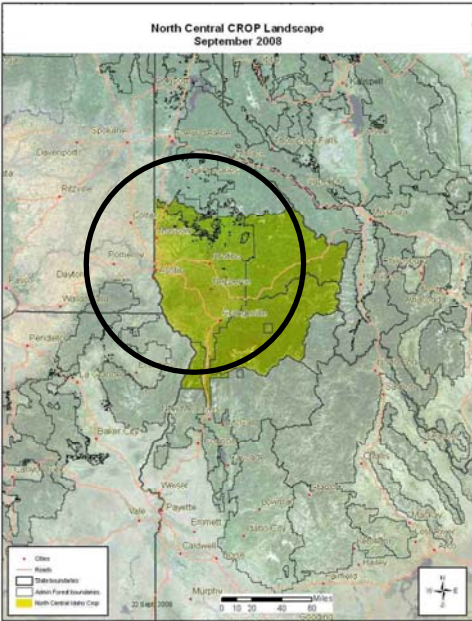
66.0449216

North Central Idaho CROP: *Western Larch* offering/removal '09 – '13
(gT = 11,839 / S = 8.905 mmbf / L = 51.005 mmbf)
(62.278 total mmbf)

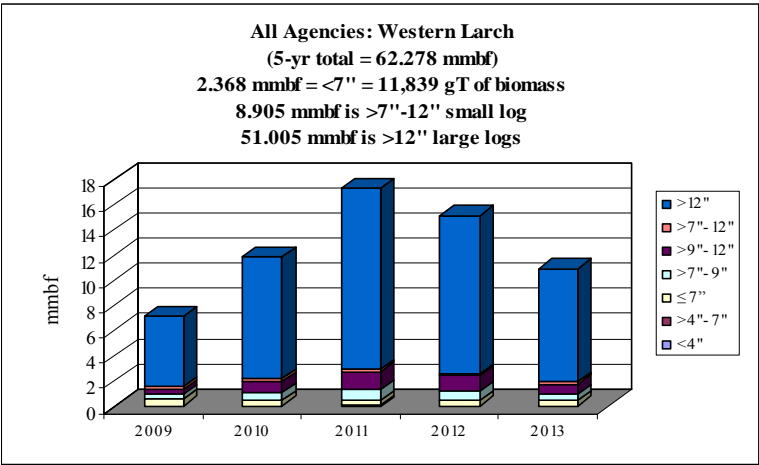
gT = green tons (up to 7" dbh)
 S = small log mmbf (>7"-12" dbh)
 L = large log mmbf (>12" dbh)

Clearwater NF: 4 RDs – 59%
(gT = 656 / S = 7.652 / L = 28.829)

Nez Perce NF: 2 RDs – 2%
(gT = 0 / S = .202 / L = .780)



Idaho Dept. of Lands: 4 SAs – 40%
(gT = 11,183 / S = 1.051 / L = 21.396)

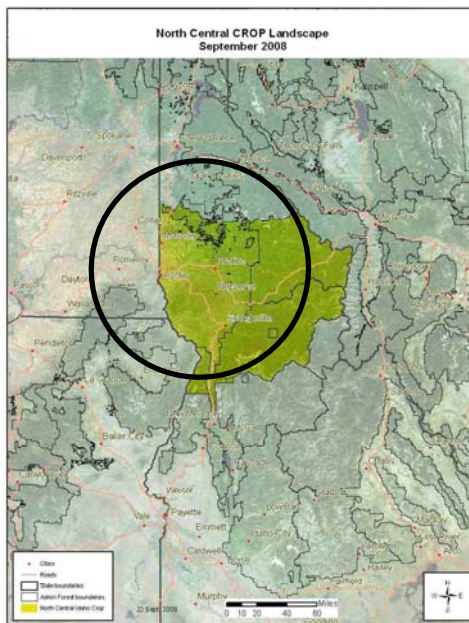


All Agencies	gT	mmbf	
Western larch	Biomass	Small Log	Large Log
2009	2687.73303	1.06573574	5.49530328
2010	2265.37714	1.72065422	9.6679254
2011	2334.71281	2.47989242	14.3226187
2012	2304.39006	2.14014603	12.5385907
2013	2246.70738	1.49888452	8.9804637
Totals	11838.9204	8.90531294	51.0049018
%	4%	14%	82%
mmbf	2.36778409		

62.2779988

North Central Idaho CROP: *Ponderosa Pine* offering/removal '09 – '13
(gT = 11,512 / S = 4.482 mmbf / L = 28.349 mmbf)
(35.133 total mmbf)

gT = green tons (up to 7" dbh)
 S = small log mmbf (>7"-12" dbh)
 L = large log mmbf (>12" dbh)



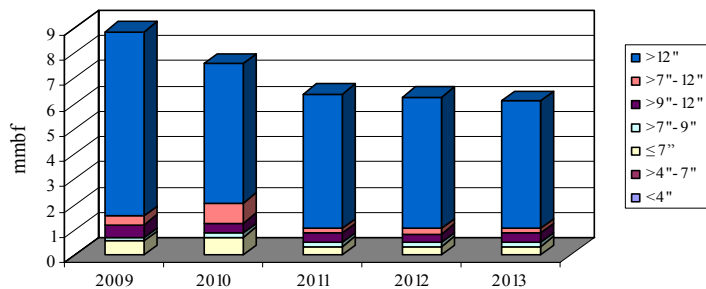
Clearwater NF: 4 RDs – 20%
(gT = 16 / S = 1.223 / L = 5.875)

Nez Perce NF: 2 RDs – 9%
(gT = 205 / S = 1.49 / L = 1.487)

Idaho BLM: 1 FO – 3%
(gT = 1,800 / S = .6 / L = .24)

Idaho Dept. of Lands: 4 SAs – 68%
(gT = 9,491 / S = 1.169 / L = 20.747)

All Agencies: Ponderosa Pine
(5-yr total = 35.133 mmbf)
2.302 mmbf = <7" = 11,512 gT of biomass
4.482 mmbf is >7"-12" small log
28.349 mmbf is >12" large logs



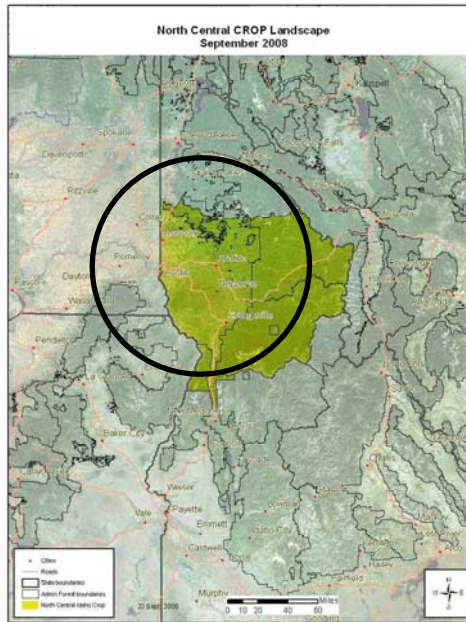
All Agencies	gT	mmbf	
Ponderosa pine	Biomass	Small Log	Large Log
2009	2719.31328	0.98908172	7.31407759
2010	3548.78416	1.36397114	5.48502201
2011	1747.86075	0.70992656	5.31725782
2012	1747.86075	0.70490505	5.19988569
2013	1748.12459	0.7140746	5.03265149
Totals	11511.9435	4.48195907	28.3488946
%	7%	13%	81%
mmbf	2.30238871		

35.1332424

North Central Idaho CROP: *Lodgepole Pine* offering/removal '09 - '13
(gT = 23,342 / S = 13.851 mmbf / L = 12.541 mmbf)
(31.059 total mmbf)

gT = green tons (up to 7" dbh)
 S = small log mmbf (>7"-12" dbh)
 L = large log mmbf (>12" dbh)

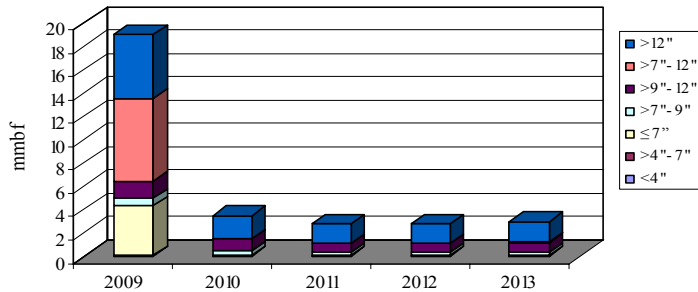
Clearwater NF: 4 RDs - 38%
(gT = 1,392 / S = 6.602 / L = 4.926)



Idaho BLM: 1 FO - 45%
(gT = 21,089 / S = 7.03 / L = 2.812)

Idaho Dept. of Lands: 4 SAs - 17%
(gT = 862 / S = .219 / L = 4.802)

All Agencies: Lodgepole Pine
(5-yr total = 31.059 mmbf)
.639 mmbf = <7" = 23,342 gT of biomass
13.851 mmbf is >7"-12" small log
12.541 mmbf is >12" large logs



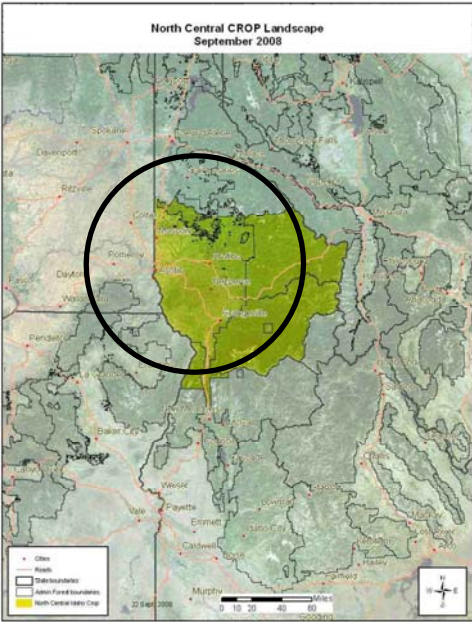
All Agencies	gT	mmbf	
Lodgepole pine	Biomass	Small Log	Large Log
2009	21763.9264	9.18486408	5.49049594
2010	463.885737	1.43453889	1.95077961
2011	363.680813	1.04007882	1.68128205
2012	363.680813	1.04007882	1.67489465
2013	387.071506	1.15103527	1.74321766
Totals	23342.2453	13.8505959	12.5406699
%	15%	45%	40%
mmbf	4.66844906		

31.0597149

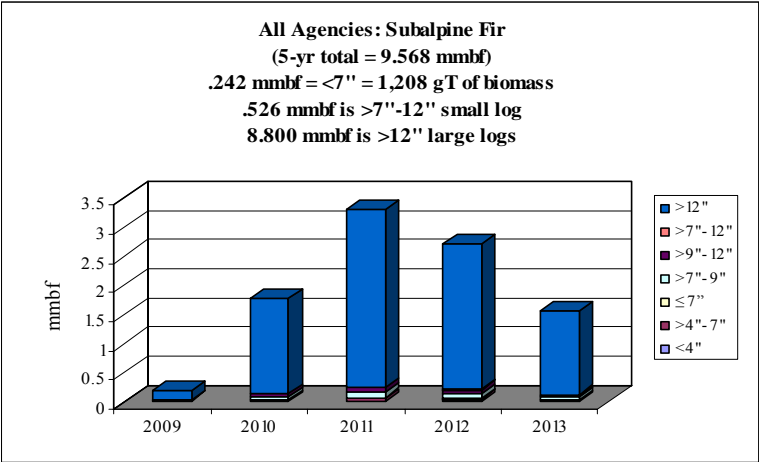
North Central Idaho CROP: *Subalpine Fir* offering/removal '09 – '13
(gT = 1,208 / S = .526 mmbf / L = 8.800 mmbf)
(9.568 total mmbf)

gT = green tons (up to 7" dbh)
 S = small log mmbf (>7"-12" dbh)
 L = large log mmbf (>12" dbh)

Clearwater NF: 3 RDs – 95%
(gT = 858 / S = .507 / L = 8.454)



Idaho Dept. of Lands: 3 SAs – 5%
(gT = 350 / S = .018 / L = .346)



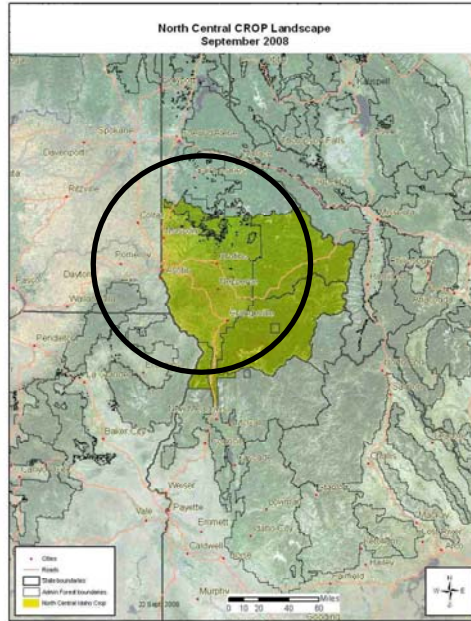
All Agencies	gT	mmbf	
Subalpine fir	Biomass	Small Log	Large Log
2009	85.1286974	0.00916485	0.16085238
2010	228.011942	0.09801316	1.64101747
2011	370.450448	0.18228166	3.04488538
2012	316.261886	0.15022299	2.5108052
2013	207.884761	0.08610565	1.44264483
Totals	1207.73773	0.52578832	8.80020525
%	3%	5%	92%
mmbf	0.24154755		

9.56754112

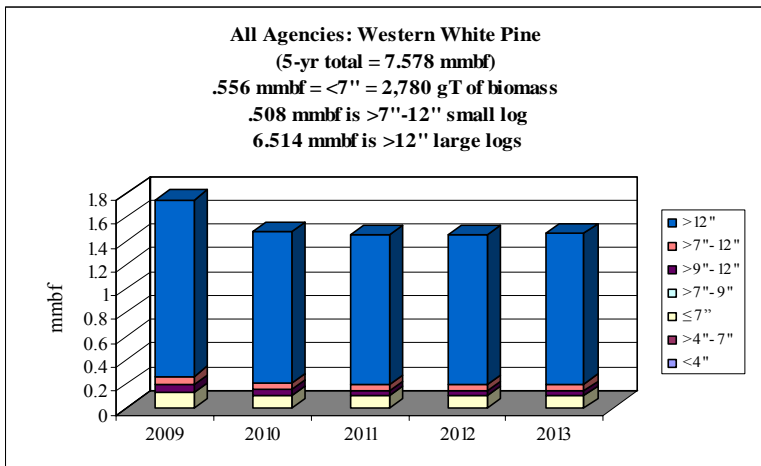
North Central Idaho CROP: Western White Pine offering/removal '09 – '13
(gT = 2,780 / S = .508 mmbf / L = 6.514 mmbf)
(7.578 total mmbf)

gT = green tons (up to 7" dbh)
 S = small log mmbf (>7"-12" dbh)
 L = large log mmbf (>12" dbh)

Clearwater NF: 1 RD – 4%
(gT = 0 / S = .203 / L = .128)



Idaho Dept. of Lands: 3 SAs – 96%
(gT = 2,780 / S = .305 / L = 6.386)



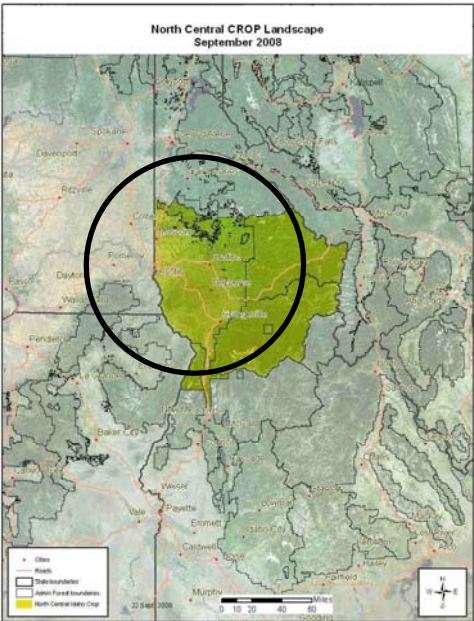
All Agencies	gT	mmbf	
Western white pine	Biomass	Small Log	Large Log
2009	658.056554	0.13421419	1.47858935
2010	530.48872	0.10152713	1.26405192
2011	530.48872	0.08958206	1.25651157
2012	530.48872	0.08958206	1.25651157
2013	530.48872	0.09299494	1.25866596
Totals	2780.01144	0.50790039	6.51433037
%	7%	7%	86%
mmbf	0.55600229		

7.57823304

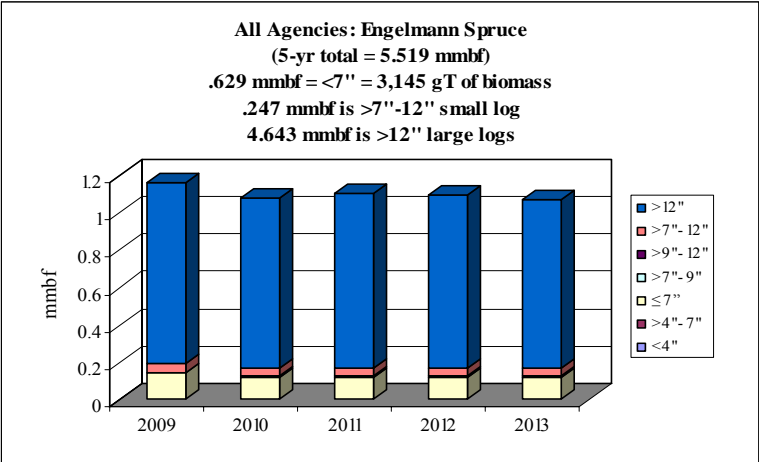
North Central Idaho CROP: *Engelmann Spruce* offering/removal '09 – '13
(gT = 3,145 / S = .247 mmbf / L = 4.643 mmbf)
(5.519 total mmbf)

gT = green tons (up to 7" dbh)
 S = small log mmbf (>7"-12" dbh)
 L = large log mmbf (>12" dbh)

Clearwater NF: 4 RDs – 5%
(gT = 0 / S = .02 / L = .263)



Idaho Dept. of Lands: 4 SAs – 95%
(gT = 3,145 / S = .227 / L = 4.380)

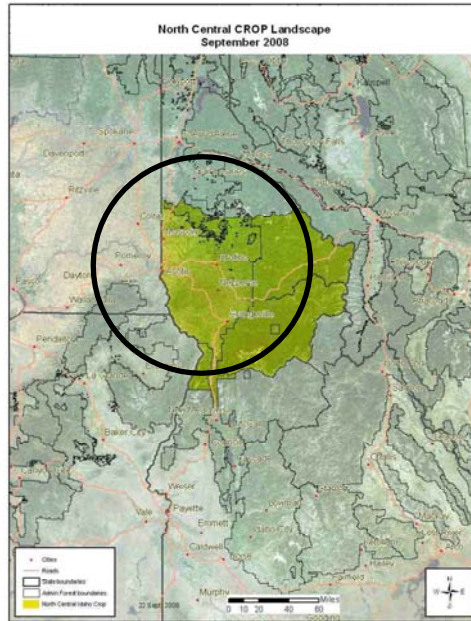


All Agencies	gT	mmbf	
Engelmann spruce	Biomass	Small Log	Large Log
2009	706.53405	0.0554803	0.96655391
2010	609.63595	0.04867211	0.90961863
2011	609.63595	0.04750772	0.93876162
2012	609.63595	0.04750772	0.92622772
2013	609.63595	0.0478404	0.90224657
Totals	3145.07785	0.24700825	4.64340846
%	11%	4%	84%
mmbf	0.62901557		

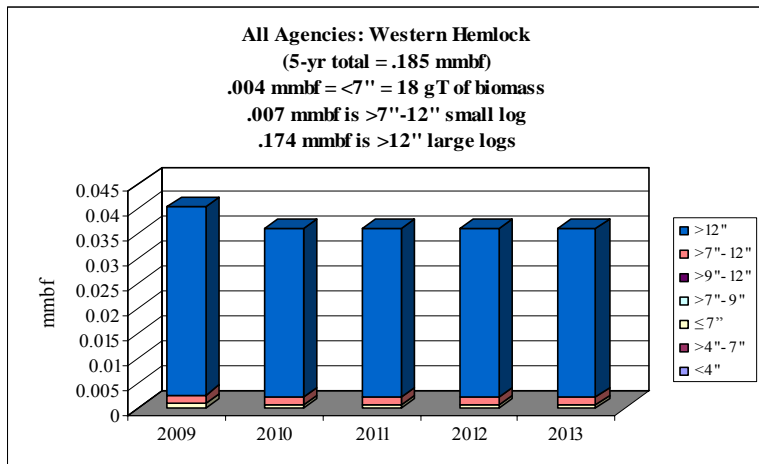
5.51943227

North Central Idaho CROP: *Western Hemlock* offering/removal '09 – '13
(gT = 18 / S = .007 mmbf / L = .174 mmbf)
(.185 total mmbf)

gT = green tons (up to 7" dbh)
 S = small log mmbf (>7"-12" dbh)
 L = large log mmbf (>12" dbh)



Idaho Dept. of Lands: 3 SAs – 100%
(gT = 18 / S = .007 / L = .174)



All Agencies	gT	mmbf	
Western hemlock	Biomass	Small Log	Large Log
2009	4.76798261	0.00163065	0.03787685
2010	3.29671941	0.00146122	0.03395794
2011	3.29671941	0.00146122	0.03395794
2012	3.29671941	0.00146122	0.03395794
2013	3.29671941	0.00146122	0.03395794
Totals	17.9548602	0.00747553	0.17370863
%	2%	4%	94%
mmbf	0.00359097		

0.18477513

For more information contact:

Catherine M. Mater:

President—Mater Ltd.

136 SW Washington Avenue; Suite 201

Corvallis, Oregon; 97333

tel: (541) 753-7335 fax: (541) 752-2952

E-mail: catherine@mater.com

Edmund Gee:

Nat'l Woody Biomass Utilization Team Leader

Nat'l Partnership Coordinator USFS

Washington DC

tel: (202) 205-1787 fax: (202) 205-1045

cell: (202) 236-5153

E-mail: eagee@fs.fed.us