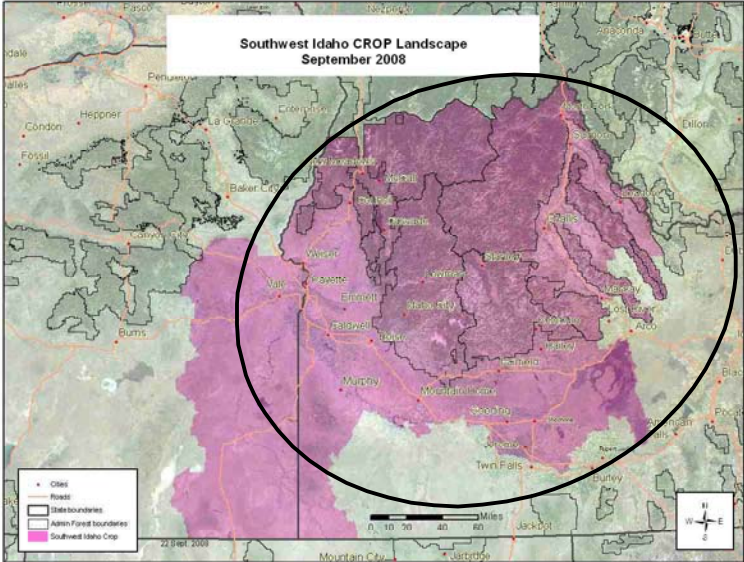


Southwest Idaho CROP
A Summary of CROP Landscape Analyses Results
(2009 – 2013)

Total 5-yr volumes: gT = 406,856; S = 266 mmbf; L = 303.9 mmbf
 (9% of total volume offered = dead)

- 4 National Forests (18 ranger districts & 1 National Recreation Area)
- 4 BLM districts
- 3 Idaho Dept. of Lands Supervisory Areas



gT = green tons (up to 7" dbh)
 S = small log mmbf (>7"-12" dbh)
 L = large log mmbf (>12" dbh)

<i>By Species</i>		5-yr total (Biomass = gT)	5-yr total Small log (mmbf)	5-yr total Large log (mmbf)
Douglas fir	(32% of 5-yr. total)	118,955	91.540	92.134
Ponderosa pine	(24% of 5-yr. total)	105,115	72.655	62.399
Mixed conifers	(15% of 5-yr. total)	15,669	28.958	67.949
Grand fir	(12% of 5-yr. total)	59,520	24.009	43.917
Lodgepole pine	(11% of 5-yr. total)	80,724	39.630	14.350
Engelmann spruce	(3% of 5-yr. total)	12,606	1.383	13.127
Western juniper	(2% of 5-yr. total)	7,200	6.6	1.8
Subalpine fir	(1% of 5-yr. total)	3,444	.962	4.458
Western larch	(<1% of 5-yr. total)	3,623	.266	3.778

Boise NF: (gT = 73,437; Small log = 113.253 mmbf; Large log = 86.494 mmbf)

Ranger Districts	5-yr total (Biomass = gT)	5-yr total Small log (mmbf)	5-yr total Large log (mmbf)
Cascade	4,024	13.242	12.7
Emmett	633	7.429	28.975
Idaho City	46,600	81.938	17.85
Lowman	11,235	8.149	12.063
Mountain Home	10,945	2.495	14.906

Payette NF: (gT = 122,603; Small log = 79.275 mmbf; Large log = 52.272 mmbf)

Ranger Districts	5-yr total (Biomass = gT)	5-yr total Small log (mmbf)	5-yr total Large log (mmbf)
Council	46,222	33.342	15.297
Krassel	0	.821	.205
McCall	13,035	7.512	6.237
New Meadow	47,396	26.957	20.335
Weiser	15,951	10.644	10.198

Salmon-Challis NF: (gT = 56,291; Small log = 33.456 mmbf; Large log = 3.616 mmbf)

Supervisory Areas	5-yr total (Biomass = gT)	5-yr total Small log (mmbf)	5-yr total Large log (mmbf)
Challis-Yankee	11,957	6.872	.990
Leadore	2,557	1.689	.119
Lost River	6,562	4.034	.556
Middle Fork	11,738	5.555	1.052
North Fork	18,256	11.094	.479
Salmon-Cobalt	5,221	4.212	.420

Sawtooth NF: (gT = 16,525; Small log = 14.48 mmbf; Large log = 2.145 mmbf)

Ranger Districts	5-yr total (Biomass = gT)	5-yr total Small log (mmbf)	5-yr total Large log (mmbf)
Fairfield	1,750	2.1	1.275
Ketchum	2,425	1.935	0
Sawtooth	12,350	10.445	.87

Idaho Dept. of Lands: (gT = 127,300; Small log = 13.757 mmbf; Large log = 146.244 mmbf)

Supervisory Areas	5-yr total (Biomass = gT)	5-yr total Small log (mmbf)	5-yr total Large log (mmbf)
Eastern	18,900	4.435	16.566
Payette Lakes	83,320	6.118	86.882
Southwestern	25,080	3.204	42.796

Idaho BLM: (gT = 10,700; Small log = 11.781 mmbf; Large log = 13.141 mmbf)

BLM Field Office	5-yr total (Biomass = gT)	5-yr total Small log (mmbf)	5-yr total Large log (mmbf)
Four Rivers	2,400	1	7
Owyhee	8,000	6.65	4.95
Salmon-Challis	300	1.531	.191
Shoshone	0	2.6	1

Southwest Idaho CROP: *All Agencies* offering/removal '09 – '13
(gT = 406,856 / S = 266.002 mmbf / L = 303.911 mmbf)
(651.284 total mmbf)

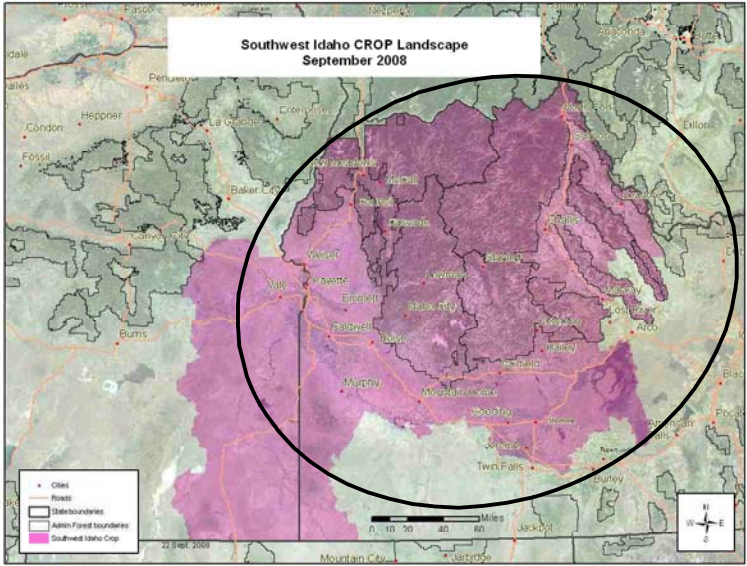
gT = green tons (up to 7" dbh)
 S = small log mmbf (>7"-12" dbh)
 L = large log mmbf (>12" dbh)

Boise NF: 5 RDs –33%
(gT = 73,437 / S = 113.253 / L = 86.494)

Payette NF: 5 RDs –24%
(gT = 122,603 / S = 79.275 / L = 52.272)

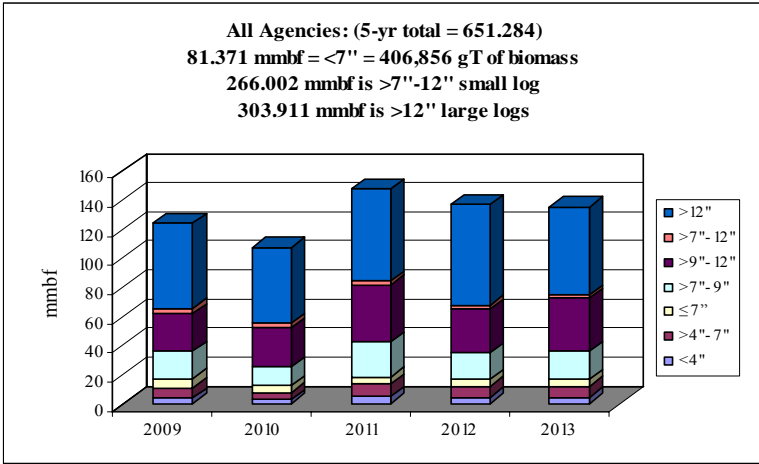
Salmon-Challis NF: 6 RDs –7%
(gT = 56,291 / S = 33.456 / L = 3.616)

Sawtooth NF: 3 RDs –3%
(gT = 16,525 / S = 14.48 / L = 2.145)



Idaho BLM: 4 FOs – 4%
(gT = 10,700 / S = 11.781 / L = 13.141)

Idaho Dept. of Lands: 3 SAs –28%
(gT = 127,300 / S = 13.757 / L = 146.244)

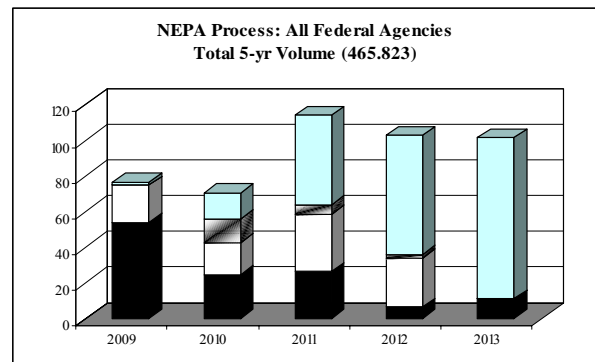
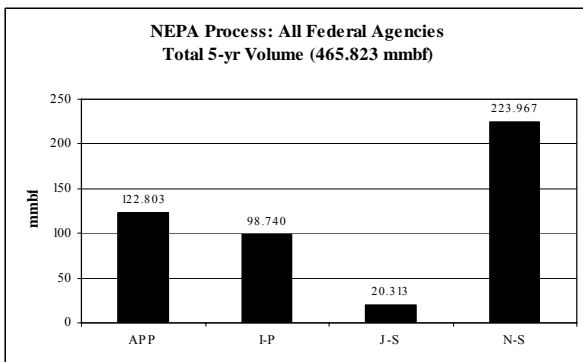


	gT	mmbf	
All Species, All Agencies	Biomass	Small Log	Large Log
2009	86398.8421	48.28334286	58.72458345
2010	63564.835	42.43031579	52.22532421
2011	91126.3728	65.79971574	63.82334551
2012	82712.0438	51.12227074	68.88640926
2013	83053.66	58.36598074	60.25164926
Totals	406855.754	266.0016259	303.9113117
%	12%	41%	47%
mmbf	81.3711507		

651.2840883

NEPA Process – All Federal Agencies: Total 5-yr volume (465.823 mmbf; includes gT as mmbf)

	<i>mmbf</i>	<i>% of total</i>
<i>Approved</i>	122.802	26%
<i>In process</i>	98.740	21%
<i>Just started</i>	20.313	4%
<i>Not started</i>	223.967	48%



Southwest Idaho CROP: All Agencies offering/removal '09 – '13
(gT = 406,856 / S = 266.002 mmbf / L = 303.911 mmbf)
(651.284 total mmbf)

Idaho BLM:

- A Four Rivers FO (gT = 2,400 / S = 1 / L = 7)
- B Owyhee FO (gT = 8,000 / S = 6.65 / L = 4.95)
- C Salmon-Challis FO (gT = 300 / S = 1.531 / L = .1911)
- D Shoshone FO (gT = 0 / S = 2.6 / L = 1)

Boise NF:

- E Cascade RD (gT = 4,024 / S = 13.242 / L = 12.7)
- F Emmett RD (gT = 633 / S = 7.429 / L = 28.975)
- G Idaho City RD (gT = 46,600 / S = 81.938 / L = 17.85)
- H Lowman RD (gT = 11,235 / S = 8.149 / L = 12.063)
- I Mountain Home RD (gT = 10,945 / S = 2.495 / L = 14.906)

Pavette NF:

- J Council RD (gT = 46,222 / S = 33.342 / L = 15.297)
- K Krassel RD (gT = 0 / S = .821 / L = .205)
- L McCall RD (gT = 13,034 / S = 7.512 / L = 6.237)
- M New Meadow RD (gT = 47,395 / S = 26.957 / L = 20.335)
- N Weiser RD (gT = 15,951 / S = 10.644 / L = 10.198)

Salmon-Challis NF:

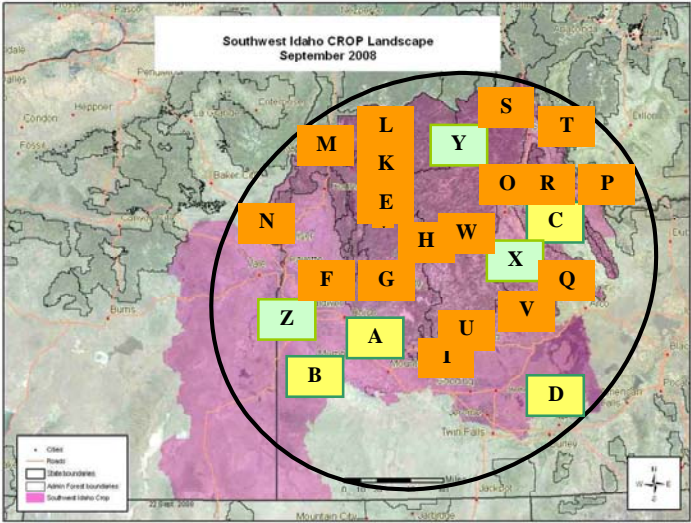
- O Challis-Yankee Fork RD (gT = 11,956 / S = 6.872 / L = .990)
- P Leadore RD (gT = 2,556 / S = 1.689 / L = .119)
- Q Lost River RD (gT = 6,561 / S = 4.034 / L = .556)
- R Middle Fork RD (gT = 11,738 / S = 5.555 / L = 1.052)
- S North Fork RD (gT = 18,256 / S = 3.247 / L = .479)
- T Salmon-Cobalt RD (gT = 5,221 / S = 4.212 / L = .420)

Sawtooth NF:

- U Fairfield RD (gT = 1,750 / S = 2.1 / L = 1.275)
- V Ketchum RD (gT = 2,425 / S = 1.935 / L = 0)
- W Sawtooth NRA (gT = 12,350 / S = 10.445 / L = .87)

Idaho Dept. of Lands:

- X Eastern SA (gT = 18,900 / S = 6.118 / L = 109.664)
- Y Payette Lakes SA (gT = 53,320 / S = 31.365 / L = 40.56)
- Z Southwest SA (gT = 25,080 / S = 3.204 / L = 42.796)



Note: CROP landscape follows agency boundaries identified in circle above.

Southwest Idaho CROP: *Douglas Fir* offering/removal '09 – '13
(gT = 118,954 / S = 91.540 mmbf / L = 92.134 mmbf)
(207.465 total mmbf)

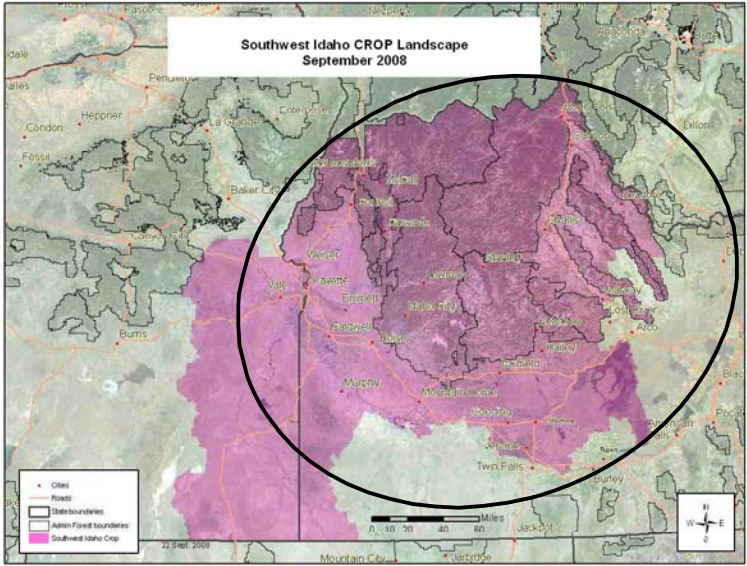
gT = green tons (up to 7" dbh)
 S = small log mmbf (>7"-12" dbh)
 L = large log mmbf (>12" dbh)

Boise NF: 4 RDs –24%
(gT = 15,965 / S = 38.706 / L = 8.925)

Payette NF: 5 RDs –28%
(gT = 38,337 / S = 26.510 / L = 23.003)

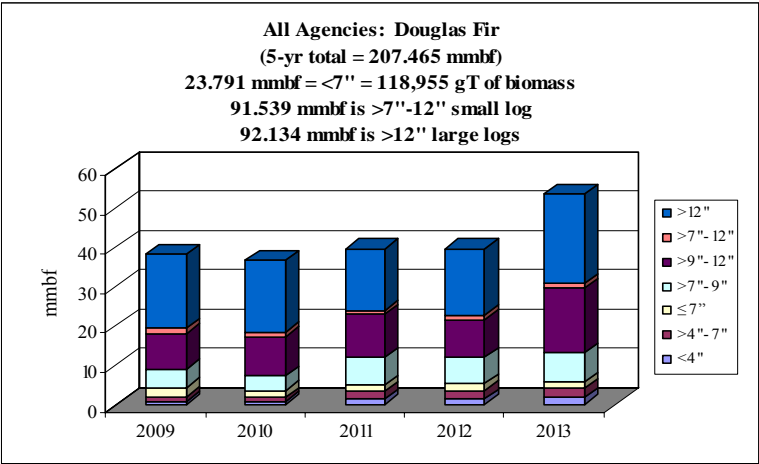
Salmon-Challis NF: 6 RDs –8%
(gT = 12,664 / S = 12.248 / L = 1.222)

Sawtooth NF: 2 RDs –3%
(gT = 4,175 / S = 4.035 / L = 1.275)



Idaho BLM: 4 FOs – 6%
(gT = 2,126 / S = 4.035 / L = 7.991)

Idaho Dept. of Lands: 3 SAs –31%
(gT = 45,689 / S = 6.006 / L = 49.718)



	gT	mmbf	
Douglas-fir	Biomass	Small Log	Large Log
2009	21777.2721	15.13136268	18.68285082
2010	17551.1848	14.97061617	18.19945094
2011	24731.773	19.0438555	15.64866989
2012	26395.4315	17.415408	16.87136114
2013	28499.2077	24.9782855	22.73173864
Totals	118954.869	91.53952786	92.13407144
%	11%	44%	44%
mmbf	23.7909738		

207.4645731

Southwest Idaho CROP: *Ponderosa Pine* offering/removal '09 – '13
(gT = 105,115 / S = 72.655 mmbf / L = 62.399 mmbf)
(156.077 total mmbf)

gT = green tons (up to 7" dbh)
 S = small log mmbf (>7"-12" dbh)
 L = large log mmbf (>12" dbh)

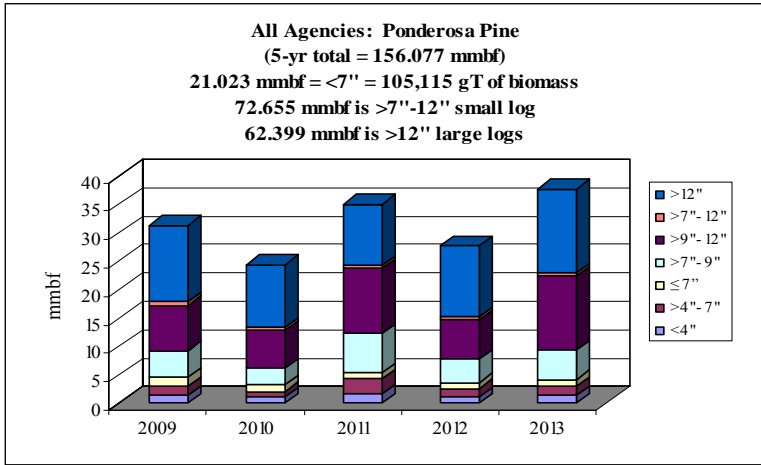
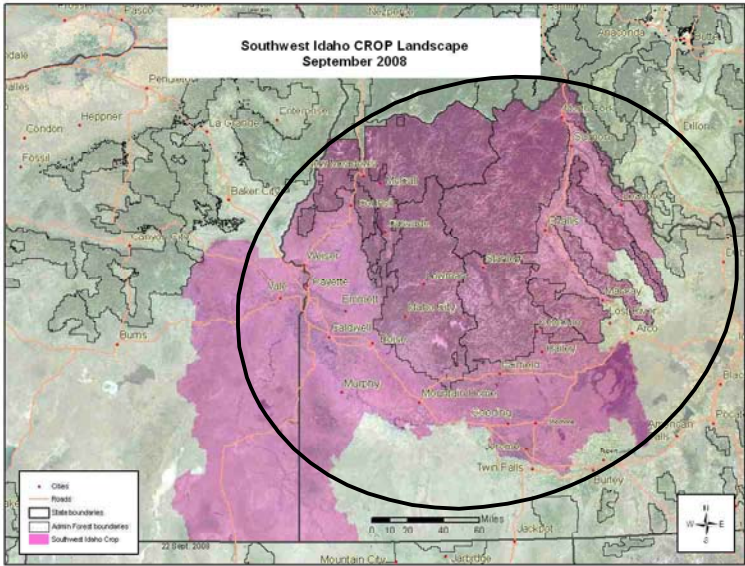
Boise NF: 3 RDs -37%
(gT = 31,903 / S = 41.901 / L = 8.925)

Payette NF: 5 RDs -30%
(gT = 41,142 / S = 25.909 / L = 12.238)

Salmon-Challis NF: 1 RDs -1%
(gT = 1,710 / S = 1.617 / L = .019)

Idaho BLM: 1 FOs - 1%
(gT = 491 / S = .3 / L = 1.1)

Idaho Dept. of Lands: 3 SAs -31%
(gT = 29,869 / S = 2.928 / L = 40.117)



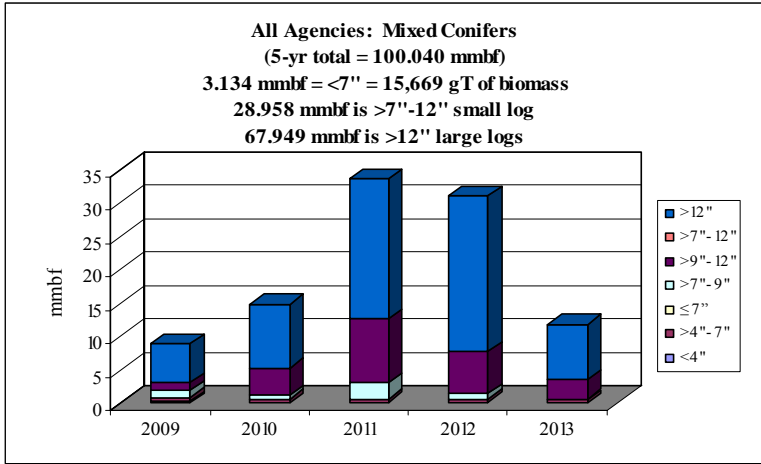
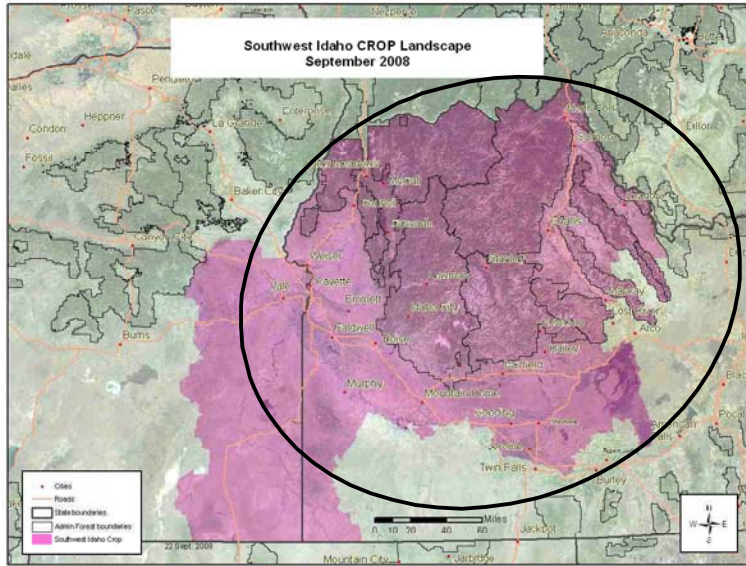
Ponderosa pine	gT	mmbf	
	Biomass	Small Log	Large Log
2009	22662.3151	13.35288278	13.39115294
2010	16629.7712	10.07674458	10.984868
2011	26769.3446	18.8988355	10.79785819
2012	18297.2196	11.6200605	12.36888319
2013	20756.3446	18.7062355	14.85605819
Totals	105114.995	72.65475887	62.39882051
%	13%	47%	40%
mmbf	21.0229991		

156.0765784

**Southwest Idaho CROP: *Mixed Conifers* offering/removal '09 – '13
(gT = 15,669 / S = 28,958 mmbf / L = 67,949 mmbf)
(100.04 total mmbf)**

gT = green tons (up to 7" dbh)
S = small log mmbf (>7"-12" dbh)
L = large log mmbf (>12" dbh)

**Boise NF: 5 RDs –100%
(gT = 15,669 / S = 28,958 / L = 67,949)**



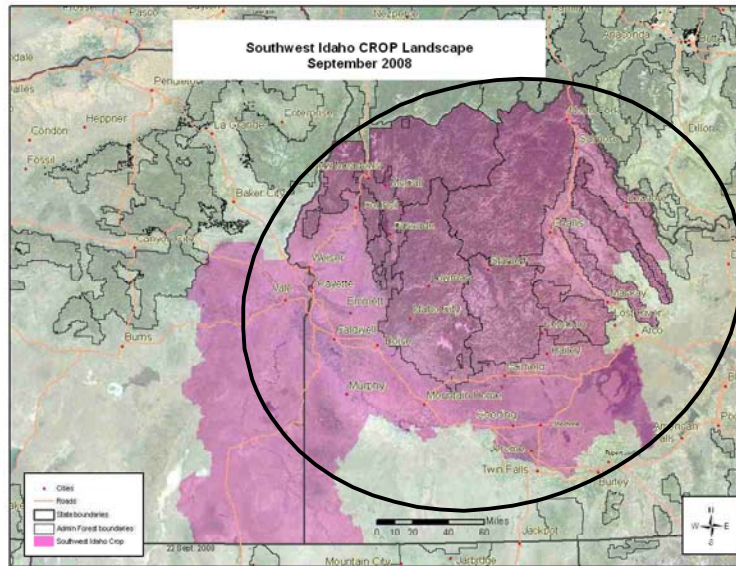
	gT	mmbf	
Mixed Conifers	Biomass	Small Log	Large Log
2009	4141.5	2.143	5.8535
2010	2912.5	4.6525	9.615
2011	3107.5	12.0025	21
2012	3095	7.1	23.24
2013	2412.5	3.06	8.24
Totals	15669	28.958	67.9485
%	3%	29%	68%
mmbf	3.1338		

100.0403

Southwest Idaho CROP: *Grand Fir* offering/removal '09 – '13
(gT = 59,520 / S = 24,009 mmbf / L = 43.917 mmbf)
(79.830 total mmbf)

gT = green tons (up to 7" dbh)
 S = small log mmbf (>7"-12" dbh)
 L = large log mmbf (>12" dbh)

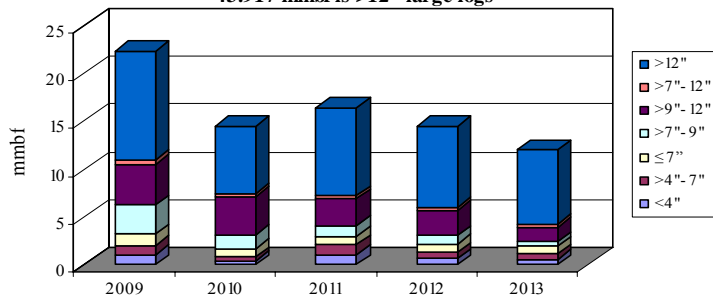
Payette NF: 4 RDs –56%
(gT = 35,579 / S = 22,001 / L = 15.491)



Idaho BLM: 1 FOs – 2%
(gT = 429 / S = .1 / L = 1.7)

Idaho Dept. of Lands: 3 SAs –42%
(gT = 23,513 / S = 1,907 / L = 26.727)

All Agencies: Grand Fir
(5-yr total = 79.830 mmbf)
11.904 mmbf = <7" = 59,520 gT of biomass
24.009 mmbf is >7"-12" small log
43.917 mmbf is >12" large logs



	gT	mmbf	
Grand fir	Biomass	Small Log	Large Log
2009	16087.7541	7.746554498	11.37967373
2010	8457.76206	5.775496681	7.012544846
2011	14695.1013	4.277208583	9.224773
2012	10628.6013	3.871408583	8.513373
2013	9651.10129	2.337908583	7.787073
Totals	59520.32	24.00857693	43.91743757
%	15%	30%	55%
mmbf	11.904064		

79.83007851

Southwest Idaho CROP: *Lodgepole Pine* offering/removal '09 - '13
(gT = 80,724 / S = 39.630 mmbf / L = 14.350 mmbf)
(70.124 total mmbf)

gT = green tons (up to 7" dbh)
 S = small log mmbf (>7"-12" dbh)
 L = large log mmbf (>12" dbh)

Boise NF: 3 RDs -8%
 (gT = 9,900 / S = 3.502 / L = 0)

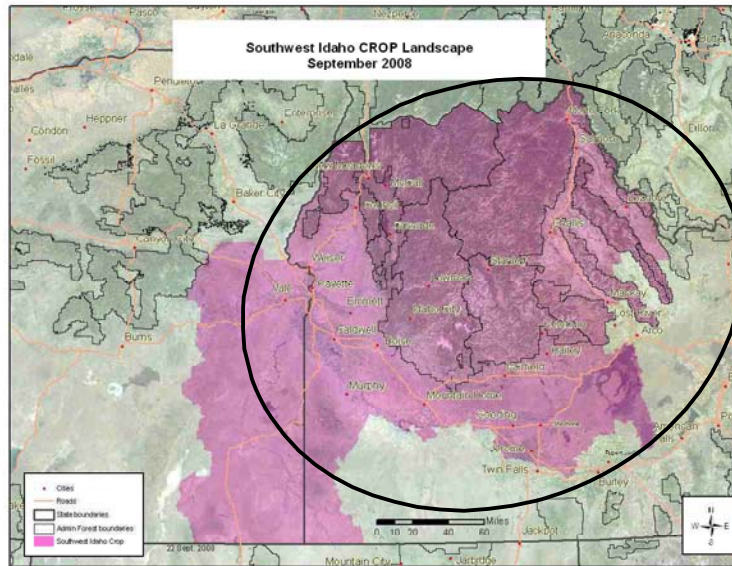
Payette NF: 2 RDs -9%
 (gT = 6,479 / S = 4.131 / L = 1.068)

Salmon-Challis NF: 6 RDs -43%
 (gT = 41,917 / S = 19.591 / L = 2.374)

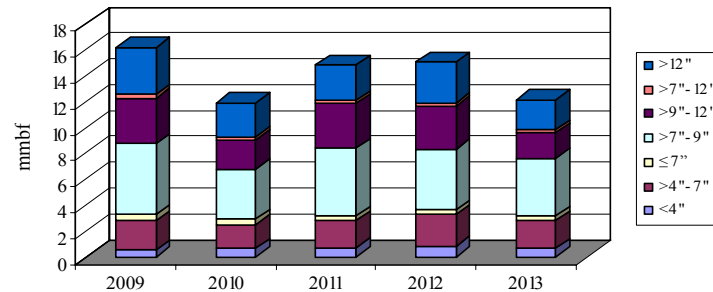
Sawtooth NF: 1 RD -20%
 (gT = 12,350 / S = 10.445 / L = .87)

Idaho BLM: 1 FOs - 1%
 (gT = 300 / S = .696 / L = 0)

Idaho Dept. of Lands: 3 SAs -19%
 (gT = 9,778 / S = 1.265 / L = 10.038)



All Agencies: Lodgepole Pine
 (5-yr total = 70.124 mmbf)
 16.145 mmbf = <7" = 80,724 gT of biomass
 39.630 mmbf is >7"-12" small log
 14.350 mmbf is >12" large logs



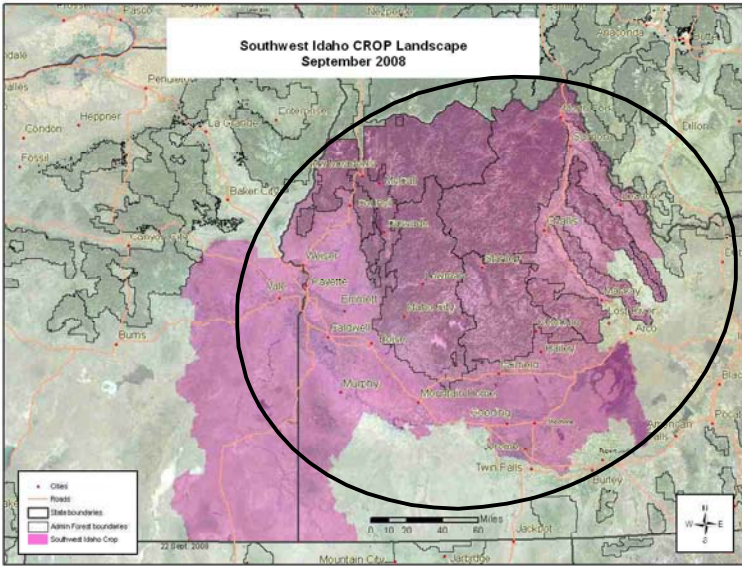
	gT	mmbf	
Lodgepole pine	Biomass	Small Log	Large Log
2009	16363.723	9.330268254	3.592605754
2010	14458.0246	6.414536574	2.610634621
2011	15879.6002	8.939282094	2.703389267
2012	18103.2377	8.284559594	3.144436767
2013	15918.9527	6.660917094	2.298724267
Totals	80723.5383	39.62956361	14.34979067
%	23%	57%	20%
mmbf	16.1447077		

70.12406194

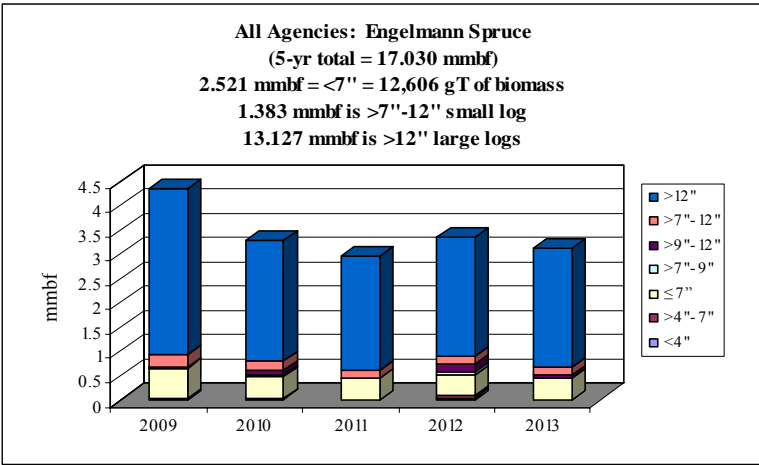
Southwest Idaho CROP: *Engelmann Spruce* offering/removal '09 – '13
(gT = 12,606 / S = 1.383 mmbf / L = 13.127 mmbf)
(17.030 total mmbf)

gT = green tons (up to 7" dbh)
 S = small log mmbf (>7"-12" dbh)
 L = large log mmbf (>12" dbh)

Payette NF: 2 RDs –5%
(gT = 601 / S = .446 / L = .309)



Idaho Dept. of Lands: 3 SAs –95%
(gT = 12,005 / S = .937 / L = 12.818)

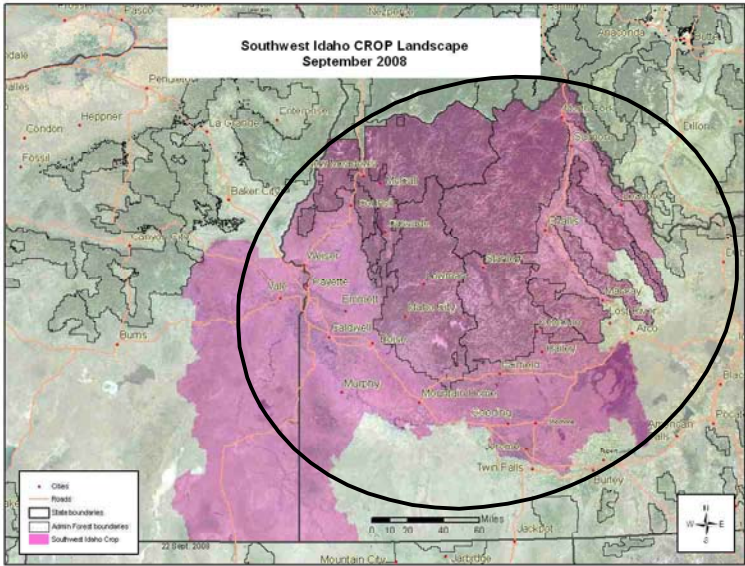


	gT	mmbf	
Engelmann spruce	Biomass	Small Log	Large Log
2009	3275.69071	0.264560162	3.436113479
2010	2339.20228	0.319778175	2.481085832
2011	2191.22774	0.171123853	2.336635501
2012	2608.22774	0.387723853	2.433535501
2013	2191.22774	0.239523853	2.439235501
Totals	12605.5762	1.382709898	13.12660581
%	15%	8%	77%
mmbf	2.52111524		

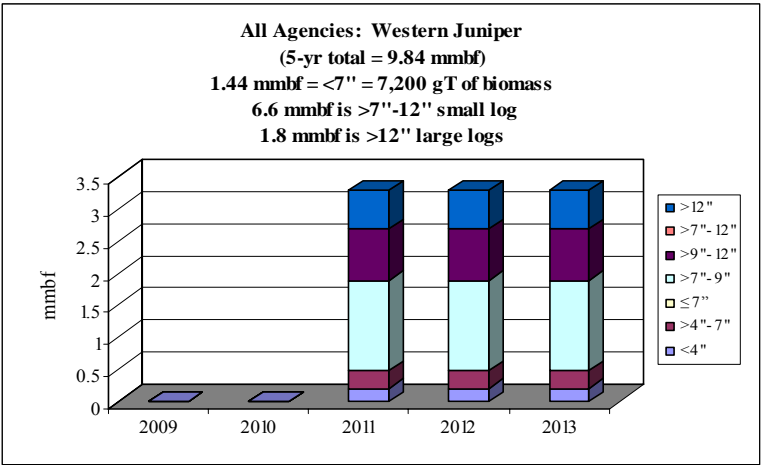
17.03043095

Southwest Idaho CROP: *Western Juniper* offering/removal '09 – '13
(gT = 7,200 / S = 6.6 mmbf / L = 1.8 mmbf)
(9.84 total mmbf)

gT = green tons (up to 7" dbh)
 S = small log mmbf (>7"-12" dbh)
 L = large log mmbf (>12" dbh)



Idaho BLM: 1 FO – 100%
(gT = 7,200 / S = 6.6 / L = 1.8)

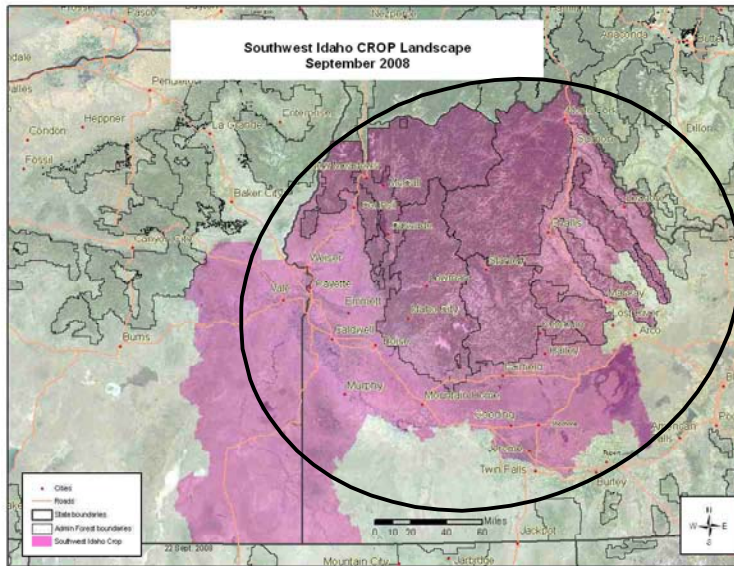


	gT	mmbf	
Western juniper	Biomass	Small Log	Large Log
2009	0	0	0
2010	0	0	0
2011	2400	2.2	0.6
2012	2400	2.2	0.6
2013	2400	2.2	0.6
Totals	7200	6.6	1.8
%	15%	67%	18%
mmbf	1.44		

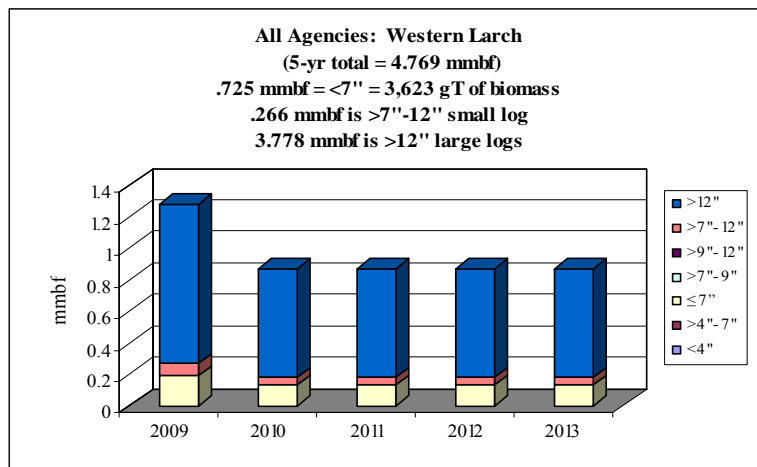
9.84

Southwest Idaho CROP: *Western Larch* offering/removal '09 – '13
(gT = 3,623 / S = .266 mmbf / L = 3.778 mmbf)
(4.769 total mmbf)

gT = green tons (up to 7" dbh)
 S = small log mmbf (>7"-12" dbh)
 L = large log mmbf (>12" dbh)



Idaho Dept. of Lands: 3 SAs –100%
(gT = 3,6623 / S = .266 / L = 3.778)



	gT	mmbf	
Western larch	Biomass	Small Log	Large Log
2009	974.125388	0.07267804	1.014515473
2010	662.318289	0.048343082	0.690948507
2011	662.318289	0.048343082	0.690948507
2012	662.318289	0.048343082	0.690948507
2013	662.318289	0.048343082	0.690948507
Totals	3623.39854	0.266050368	3.778309502
%	15%	6%	79%
mmbf	0.72467971		

4.769039579