

Woody Biomass Utilization:

Helping meet agency land management goals

Presentation at :

RETECH Distributed Energy Side Event

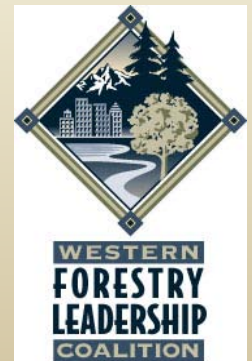
February 4, 2010

Marcia Patton-Mallory, PhD

Bioenergy and Climate Change Specialist

US Forest Service

Western Forestry Leadership Coalition



Bioenergy- creating the Win-Win-Win

- ***Energy Policy and Security***
- ***Climate Change Adaptation and Mitigation***
- ***Forest Policy***



National Policy - wood biomass utilization

- Energy and Climate Change Policy
 - Energy Policy- Energy Policy Act of 2005, Executive Order 13514
 - Requires federal agencies to increase use of renewable energy and support expanded development of renewable energy through federal actions
 - Climate Change Policy- Executive Order 13514
 - Required federal agencies to inventory their GHG emissions and improve their environmental footprint

National Policy- Climate Change

Climate Change and Forestry

- Management of carbon in forests may require additional effort to provide more resilient systems
- Adaptation and mitigation both may require biomass removal
- Climate impacts on forests will vary across the country, creating different types of challenges and/or opportunity
- Extreme events may create pulses of available biomass that are challenging to utilize

National Policy- Forestry

Forestry Policy

- National Fire Plan 2000

A comprehensive approach to the management of wildland fire, hazardous fuels, and ecosystem restoration and rehabilitation on Federal and adjacent State, tribal, and private forest and range lands in the United States.

- Healthy Forests Restoration Act 2003

Biomass utilization to create markets to reduce cost of hazardous fuels and restoration work

- Forest Landscape Conservation Program 2009

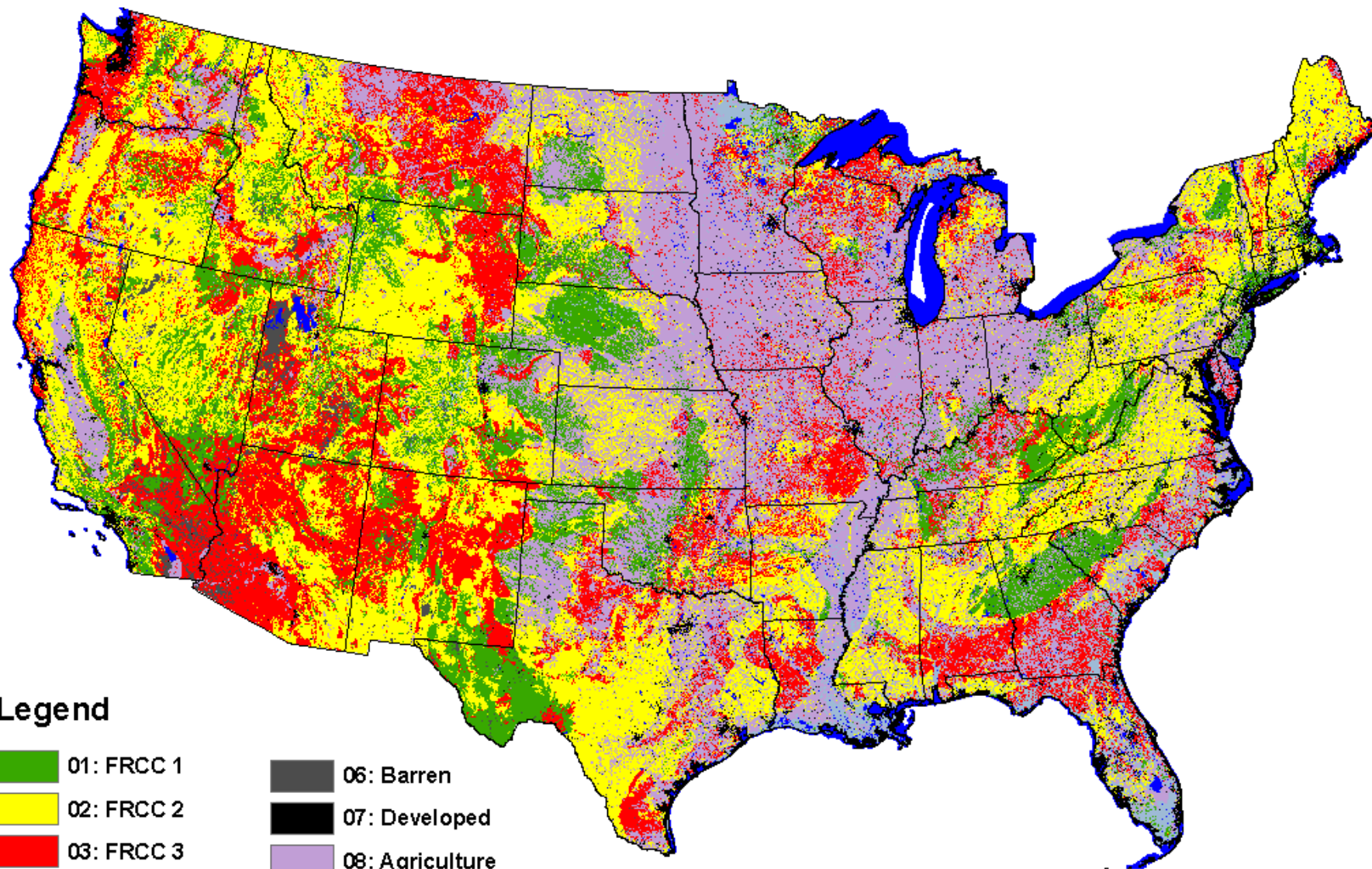
- Farm Bill of 2008 “Community Wood Energy Program”

Forest Biomass

Sources that require removal:

- Reducing hazardous fuels
- Thinning to restoration to healthy conditions
- Improve wildlife habitat
- Protect watersheds
- Respond to blow downs, insect outbreaks, and ice storms (pulse events)
- Disposal of harvesting residues

LANDFIRE Rapid Assessment Fire Regime Condition Class

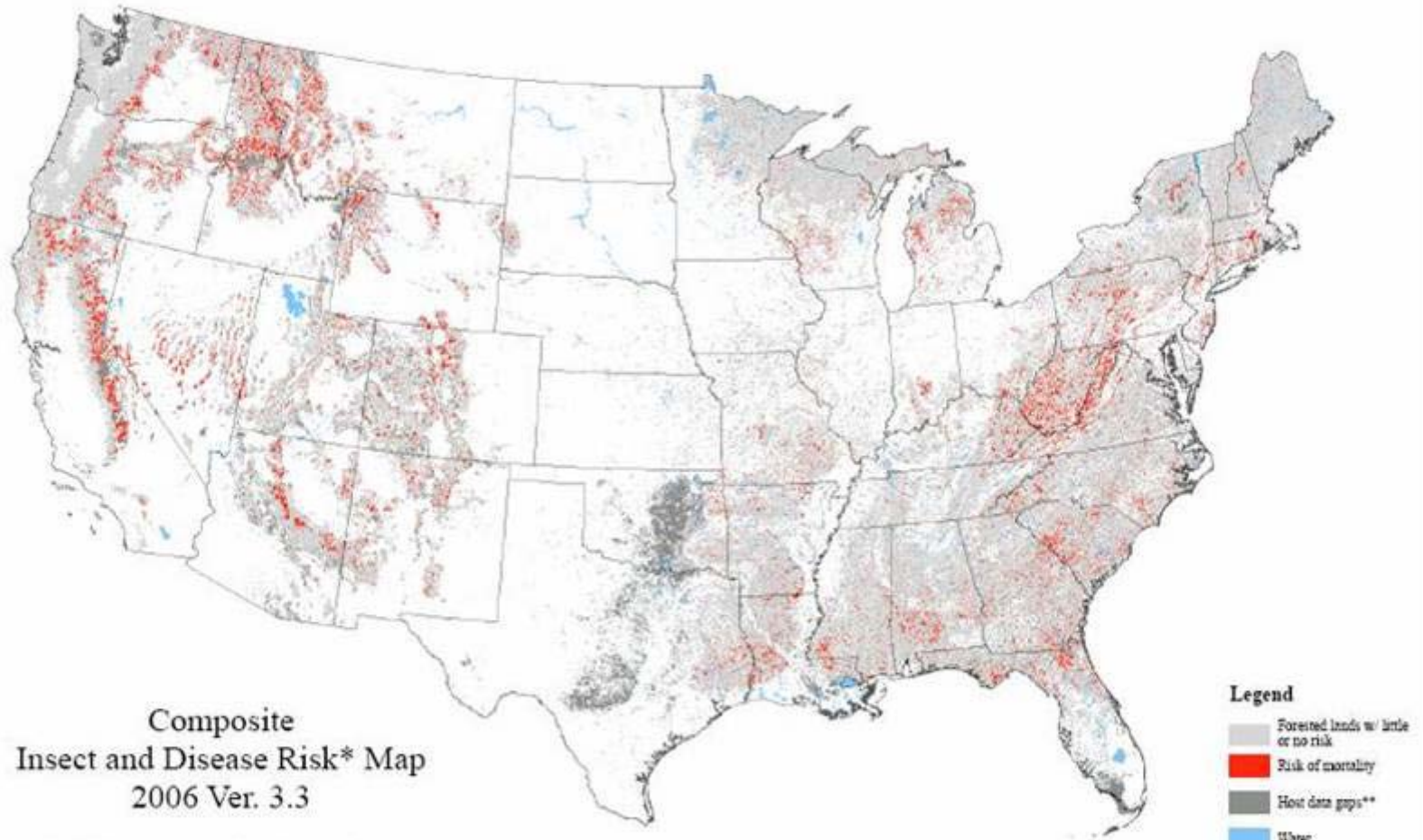


Legend

- 01: FRCC 1
- 02: FRCC 2
- 03: FRCC 3
- 04: Water
- 05: Snow/Ice

- 06: Barren
- 07: Developed
- 08: Agriculture
- 09: Non-Classified V
- 10: Unclassified

Forest Insect and Disease Risk

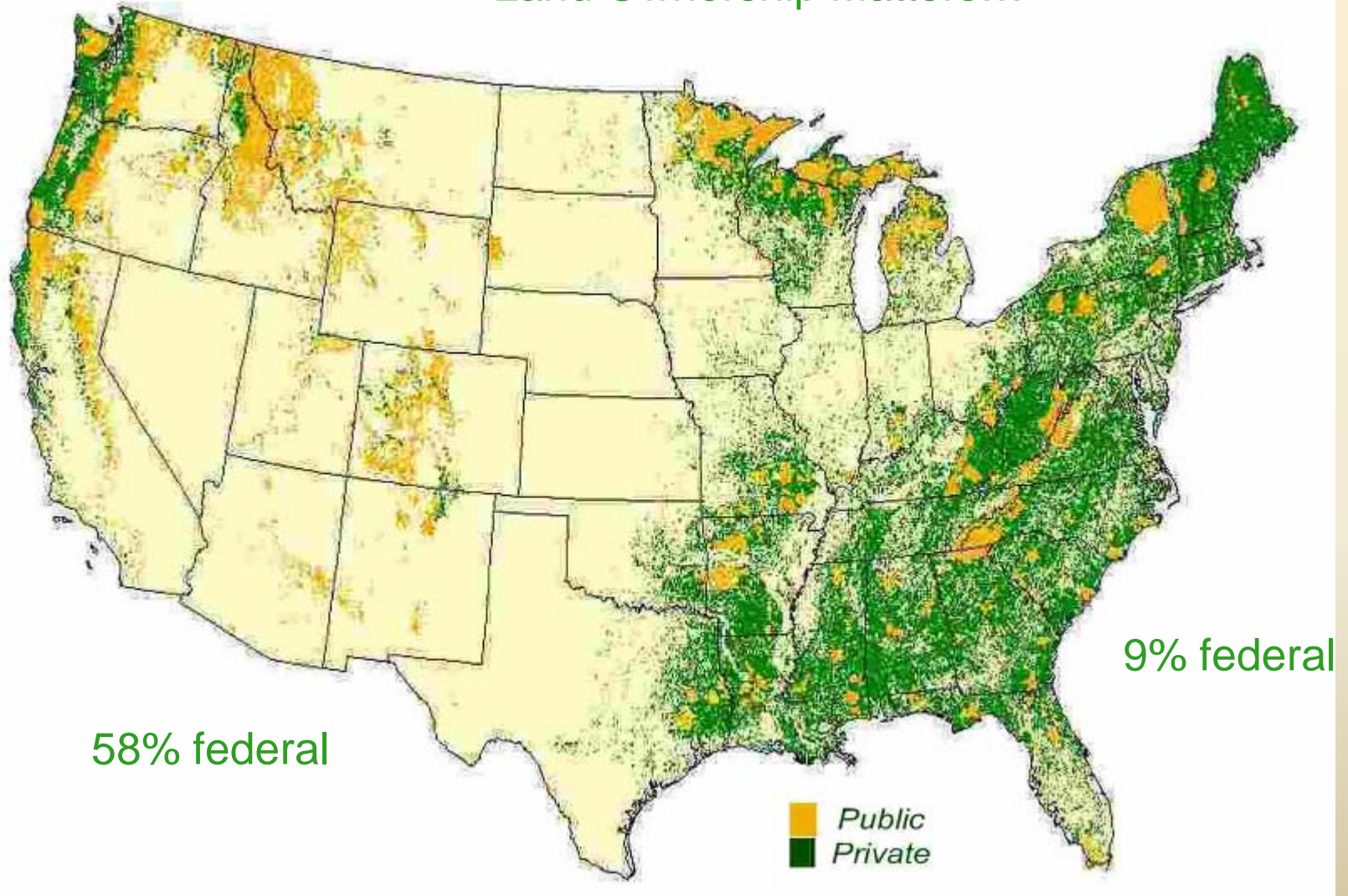


*The expectation that 25% or more of the standing live volume of trees greater than 1" in diameter will die over the next 15 years, including background mortality.

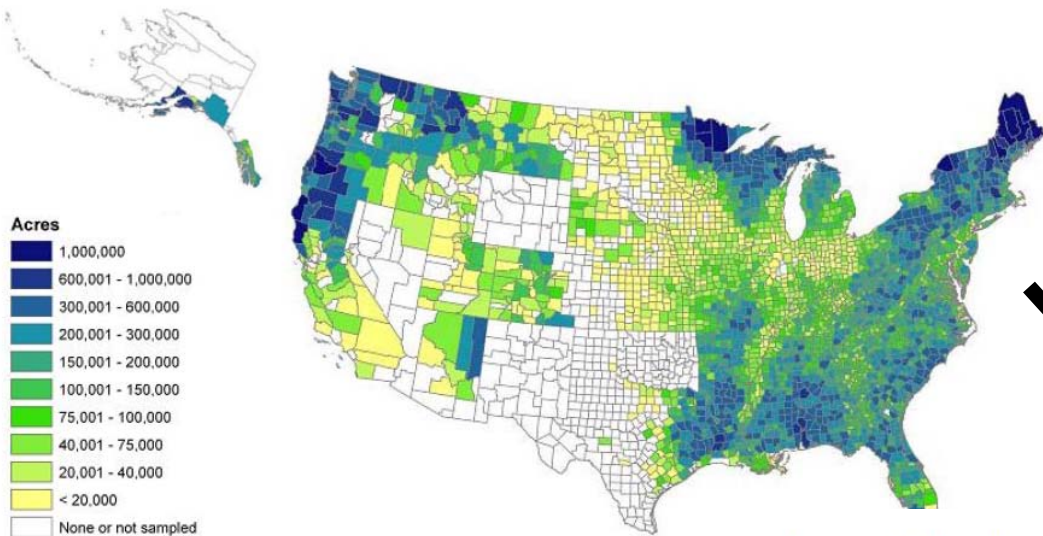
Printing Date: September 22, 2006

Public vs Private Forests

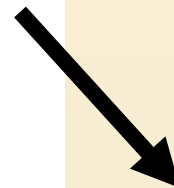
Land Ownership Matters...



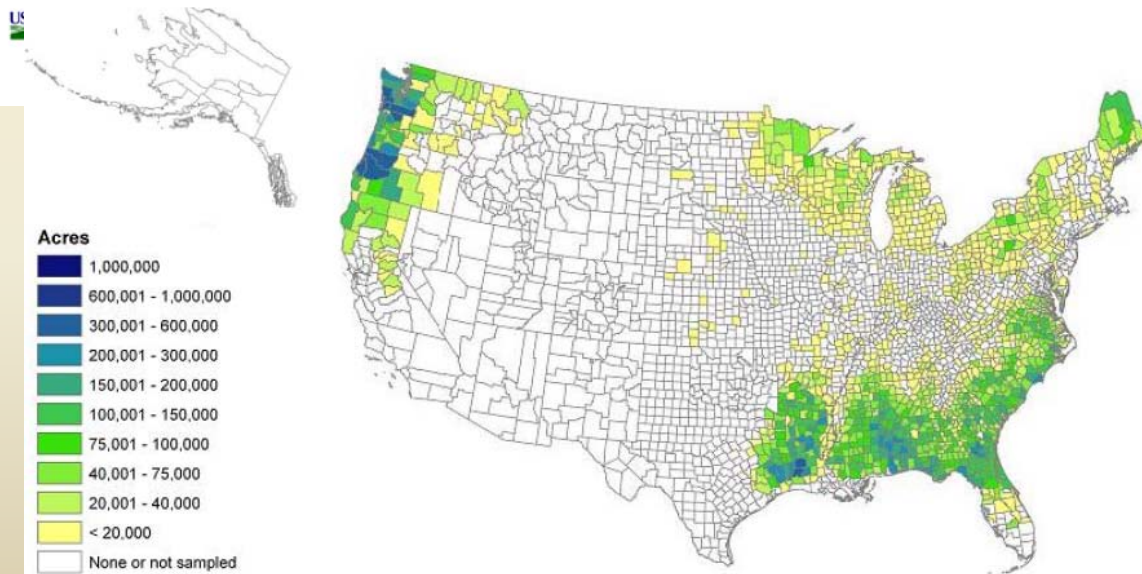
Area of Timberland Qualifying Under the 2008 Farm Bill



Shows impact of the current "Renewable Biomass" definition in the Renewable Fuels Standard (EISA 2007)



Area of Timberland Qualifying Under the 2007 Energy Act



Western Forestry Leadership Coalition

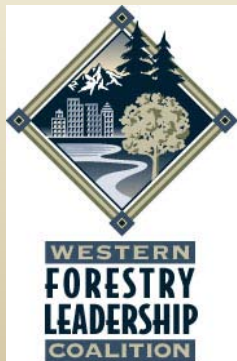
We work as a Coalition to address critical resources issues across ownerships and jurisdictions. We assist family forest owners, rural and state fire organizations, and community forestry groups; improving forest health, encouraging land conservation, and stimulating community economic recovery.

<http://www.wflccenter.org/>

US Forest Service Web sites:

Biomass www.fs.fed.us/woodybiomass/

Climate Change www.fs.fed.us/ccrc/



mpattonmallory@fs.fed.us

(970) 295-5947

