



Project Status

- Project schedule and re-baselining.

Operations and Maintenance Plan

- Purpose, Functions, Organization/Governance
- Implementation and Requirements





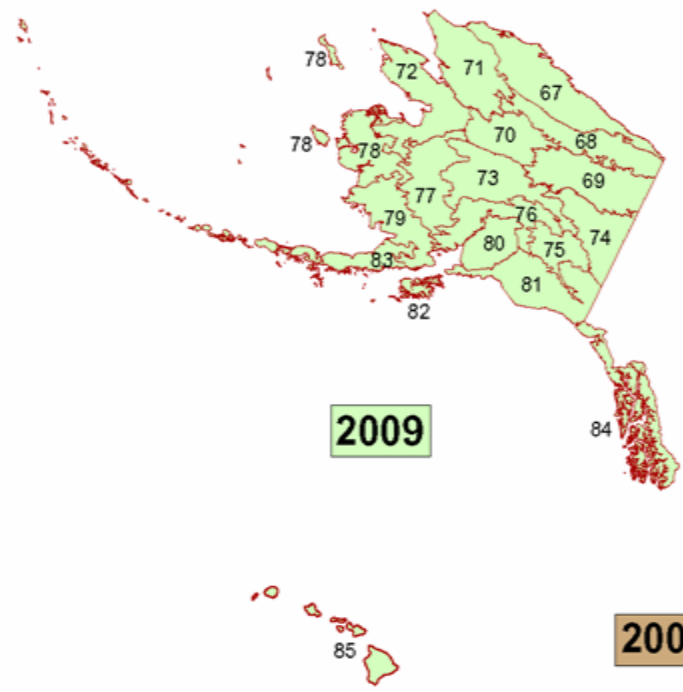
Schedule



Key Milestones	Schedule
Prototypes (Map Zones 16/19)	
Rapid Assessment - conterminous 48 states	2006
LANDFIRE for western states	2006
LANDFIRE for eastern states	2008
LANDFIRE for Alaska and Hawaii	2009

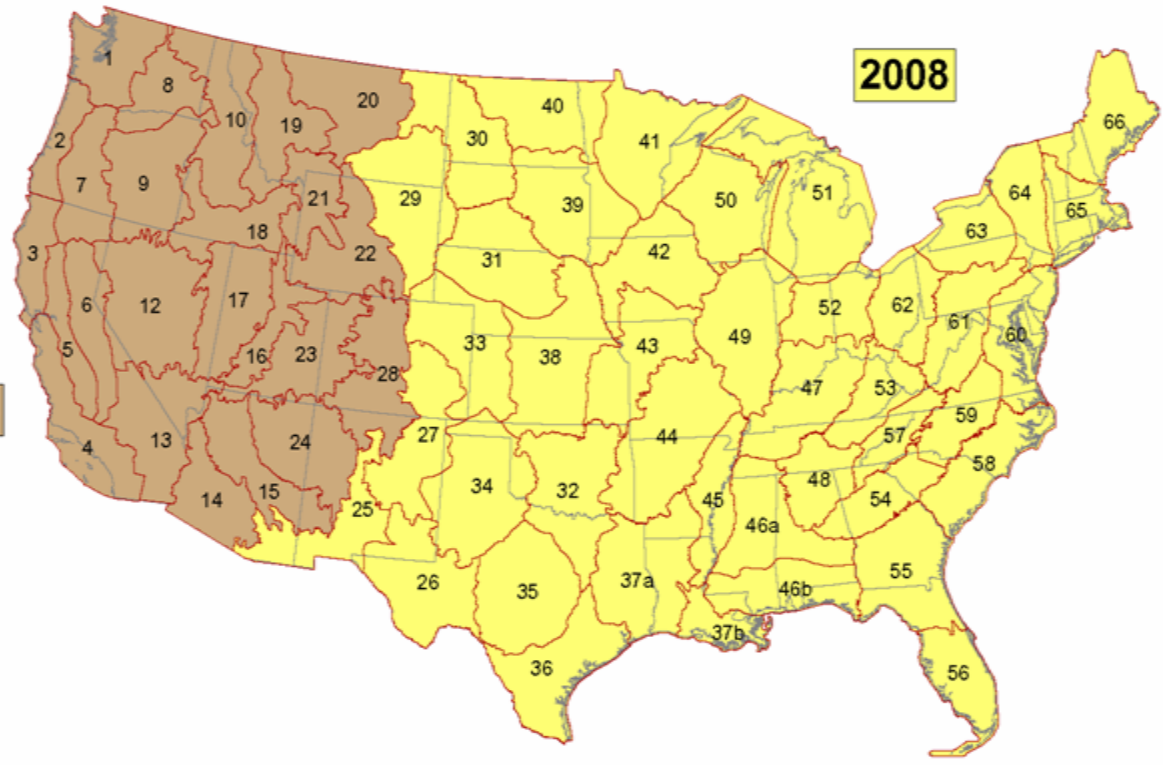
The LANDFIRE Executive Oversight Committee re-baselined the project eastern milestone from March 30, 2008 to September 30, 2008.

LANDFIRE mapping zones by year of completion



2009

2006



2008

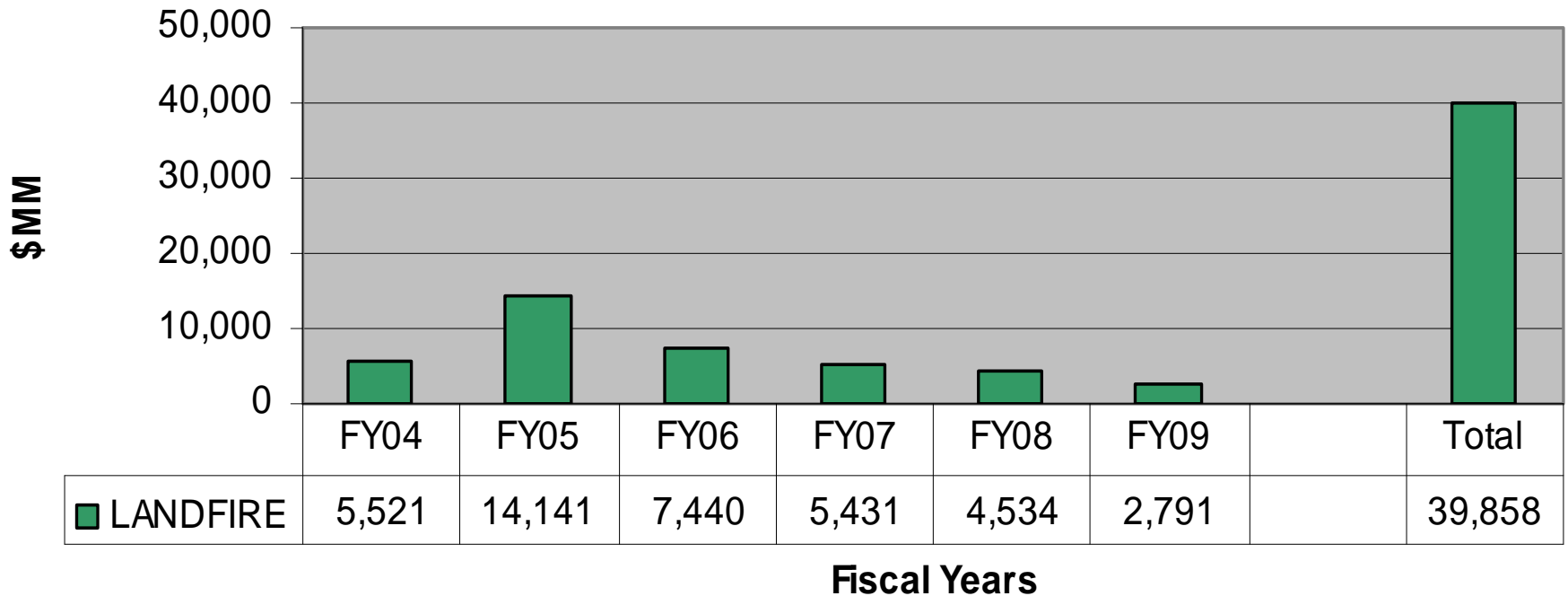




Current Budget



LANDFIRE - Project Budget





LANDFIRE “PROGRAM”



PRINCIPAL PURPOSES:

- Provide national level, landscape scale geo-spatial products to support fire fuels management planning
- Provide consistent fuels data to support fire planning tools and analyses, such as Fire Program Analysis
- *Provide landscape cross-boundary strategic products for fire and land management activities*
- *Supplement, as possible, planning and management activities, including monitoring, that require consistent vegetative data (e.g. grizzly bear project)*
- *Supplement, as possible, strategic and tactical planning for fire operations (e.g. WFDSS)*



LANDFIRE “PROGRAM”



PROGRAM FUNCTIONS:

- Data management
- Training – Technology Transfer
- User support and program communications
- Data updates/currency
- Managing innovations and change
 - New capabilities for existing uses
 - New capabilities for new uses
 - New technologies
- Governance



LANDFIRE “PROGRAM”



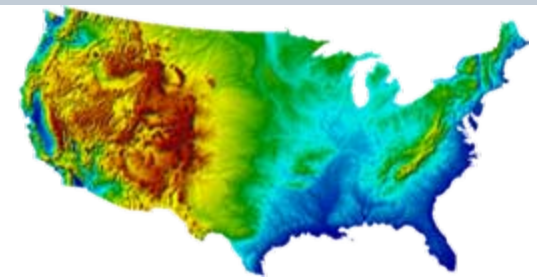
DATA CURRENCY AND UPDATES:

- Short-term refresh of original (2001) data to be current up to 2009
- Biennial updates of data (starting 2009)
- Complete re-mapping of data (decadal cycle, beginning 2017)

- Refresh/Biennial Updates: 9 Core Data Layers
- Decadal Update: Re-mapping of applicable original data layers

LANDFIRE

Spatial Products



- **Fire Behavior Layers**

- 13 Anderson (1982) Fire Behavior Fuel Models
- 40 Scott/Burgan (2005) Fire Behavior Fuel Models
- Forest Canopy Bulk Density
- Forest Canopy Base Height
- Forest Vegetation (stand) Height
- Forest Canopy Cover

- Elevation
- Aspect
- Slope

- **Fire Effects Layers**

- Fuel Loading Models
- Fuel Characteristics Classification System (FCCS)

- **Vegetation Layers**

- Environmental Site Potential
- Biophysical Settings

- Existing Vegetation
- Existing vegetation height
- Existing vegetation cover

- **Fire Regime Layers**

- Fire Regime Condition Class (FRCC)
- FRCC Departure
- Fire Regime Groups
- Simulated Historical Fire Return Interval
- Percent of non-lethal fire
- Percent of mixed-severity fire
- Percent of stand-replacement fire
- Succession Classes



LANDFIRE “PROGRAM”



ORGANIZATION:

- Interim: Program management conducted by current organization
- 2009: Program management organization embedded in an existing federal agency; TBD by June 2008
- Program manager and appropriate staff
- Use of contract support for many functions
- Ongoing joint USDA FS and DOI funding



LANDFIRE “PROGRAM”



GOVERNANCE:

- Establish an executive-level steering group
 - Provide oversight of and strategic direction to the program management organization
 - Manage innovation, including prioritization of new functionality
 - Collaboration and coordination with non-fire programs and organizations
 - Integration with legacy and future programs and capabilities (e.g. forest health)
- Mechanism for customer involvement and feedback

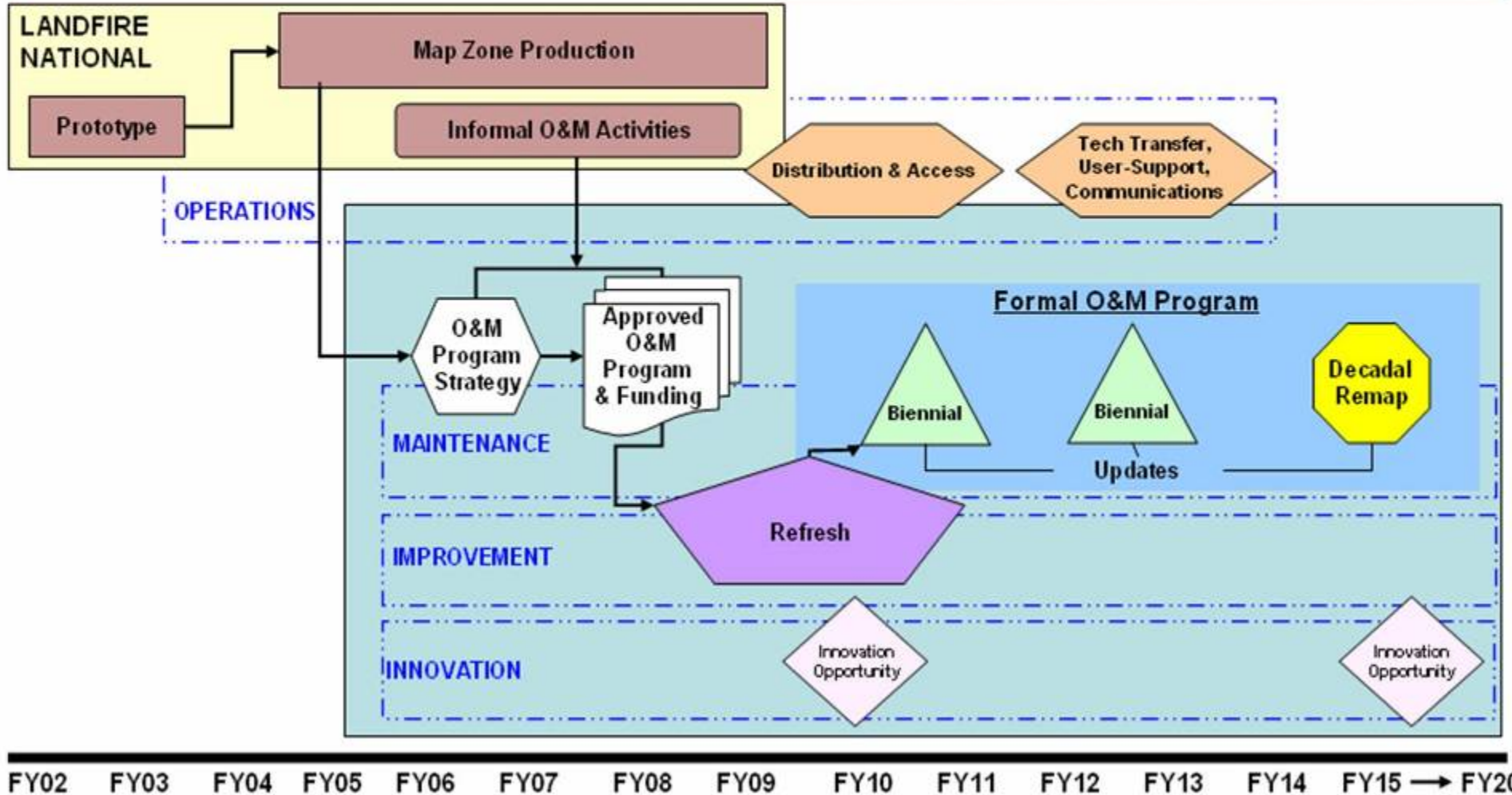
RESOURCE REQUIREMENTS:

- FY 2008: \$1.2 million
- FY 2009 – 2014: \$2.8 million annually (biennial remapping program)
- FY 2015 – 2016: \$3.7 million annually (continued biennial updates and data collection for decadal remapping)
- FY 2017 – 2019 - \$7.0 million annually (decadal remapping years)



Operations and Maintenance

LANDFIRE GOVERNANCE





Funding by Year

