

# Cohesive Wildfire Strategy

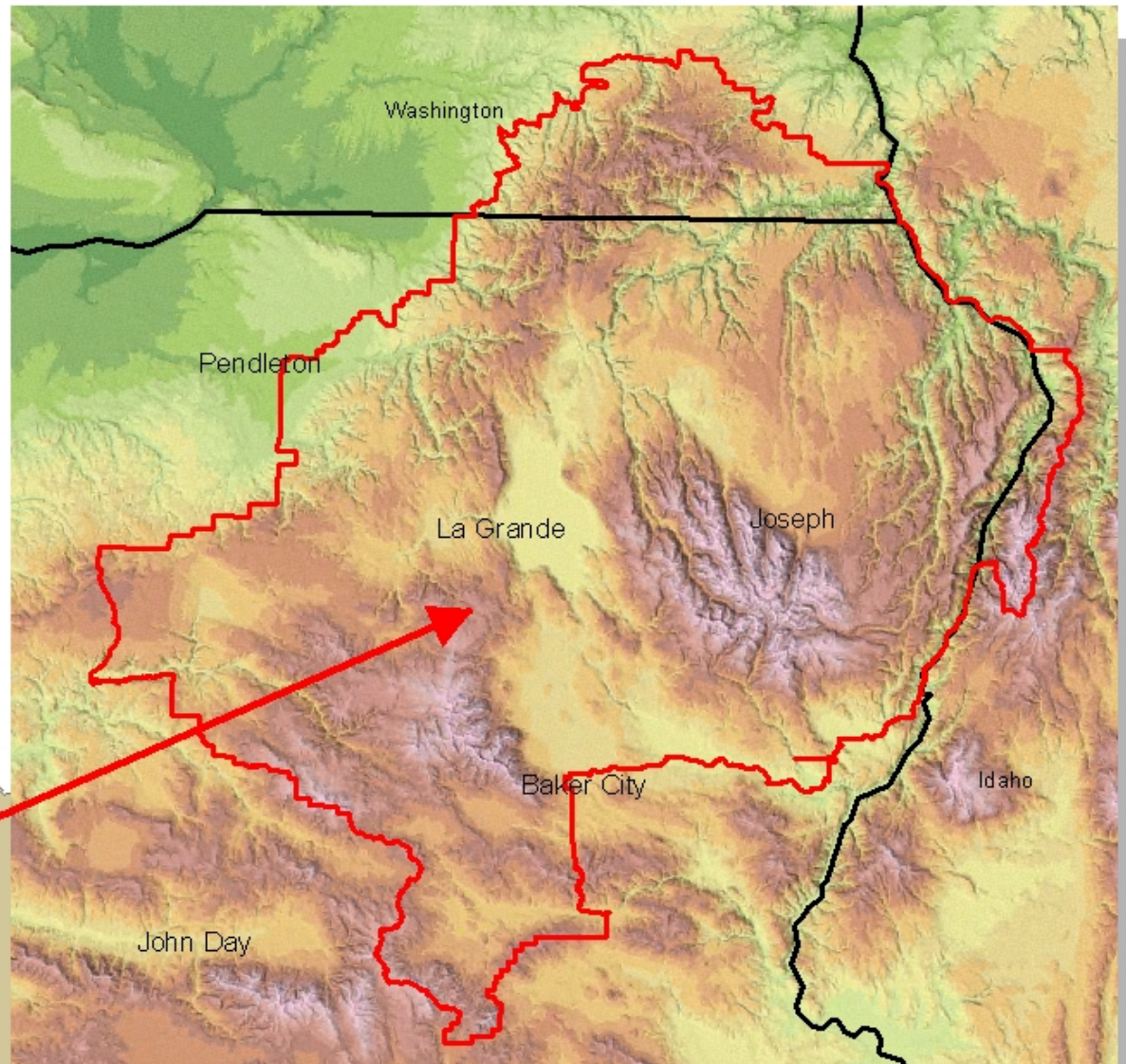
## Northern Blue Mountain

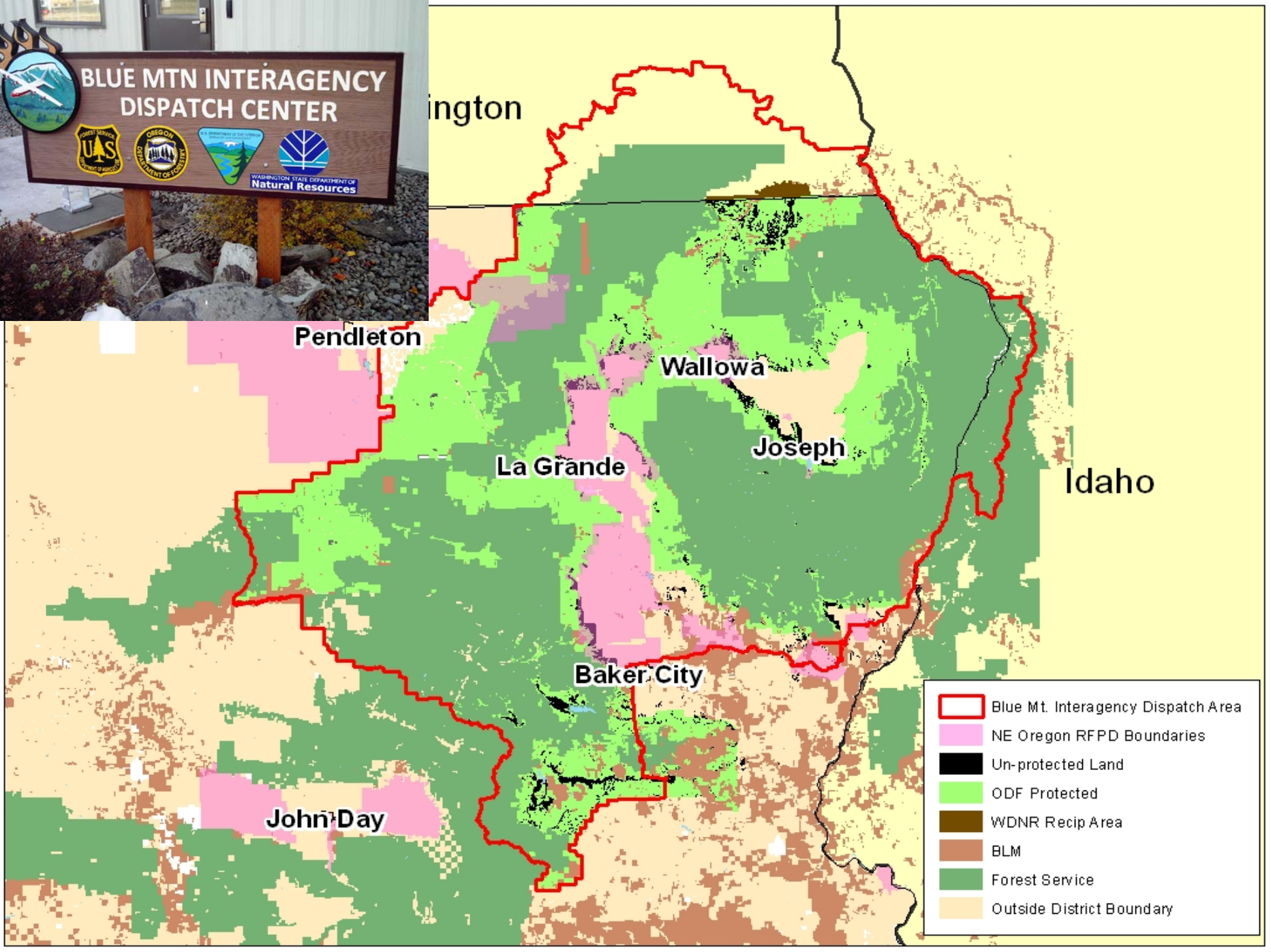
### Pilot Project





# Northern Blue Mountain Geo-region



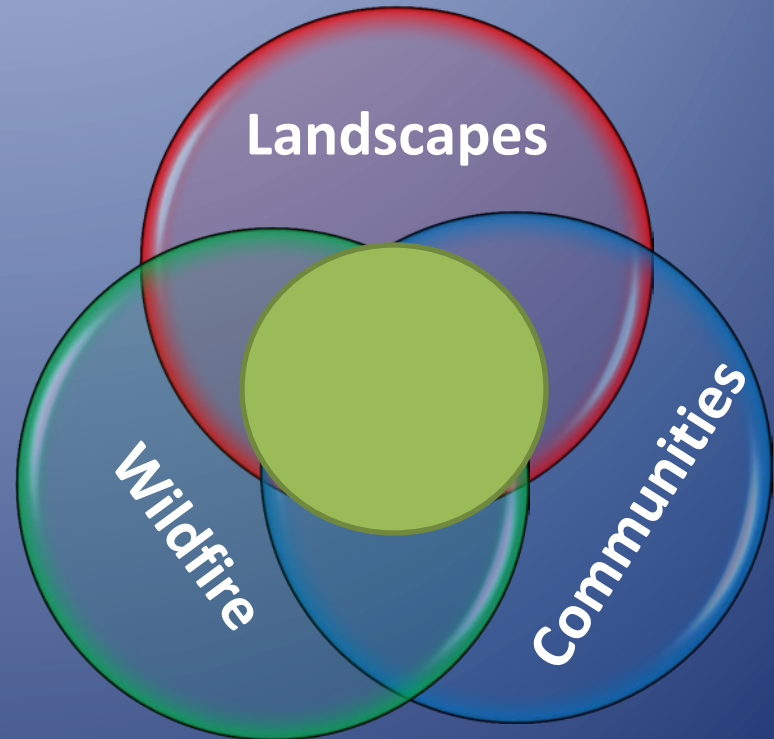


- Blue Mt. Interagency Dispatch Area
- NE Oregon RFPD Boundaries
- Un-protected Land
- ODF Protected
- WDNR Recip Area
- BLM
- Forest Service
- Outside District Boundary

# Current



# Blue Mountain Pilot Project Vision



# Northern Blue Mountain CWS Pilot



## Responding to Wildfire

1. Strengthen interagency collaboration on fire suppression and management.
2. Develop interagency fire fighting capacity tiered to fire danger levels.
3. Develop interagency approach to fire severity staffing.
4. Develop a more comprehensive Fire Danger Operating Plan.
5. Explore joint funding of critical resources, protection exchanges.

# Northern Blue Mountain CWS Pilot



Creating Fire  
Adaptive  
Communities

1. Develop more comprehensive CWPPs.
2. Develop “all agency” fire suppression plans for WUIs.
3. Utilize risk assessment models in developing an “all lands” approach to fuels treatment.
4. Accelerate fuels treatment in and around WUIs by improving economics of biomass .
5. Increase UAS of forest and wildfire management (prescribed and natural).

# Northern Blue Mountain CWS Pilot

**Restoring  
and  
maintaining  
resilient  
landscapes**

1. Increase coordination and risk assessment modeling on private/public fuels treatment.
2. Improve efficiencies and economics of forest biomass removal and marketing.
3. Support large scale forest management projects on Federal lands.
4. Prioritize management of forests at risk of uncharacteristically severe fire.
5. Gain UAS for managed wildfire (prescribed and natural)



# Northern Blue Mountain CWS Pilot



Restoring  
and  
maintaining  
resilient  
landscapes

## Biomass Utilization:

### Why

- Stretch fuel treatment \$
- Increase local energy independence
- Provide rural jobs
- Decrease smoke in the air

### How

- Foster market for biomass heat
- Invest in project feasibility
- Increase supply through collaboration
- Connect suppliers to markets
- Improve efficiency of biomass removal

# Northern Blue Mountain CWS Pilot

## *Momentum is building...*

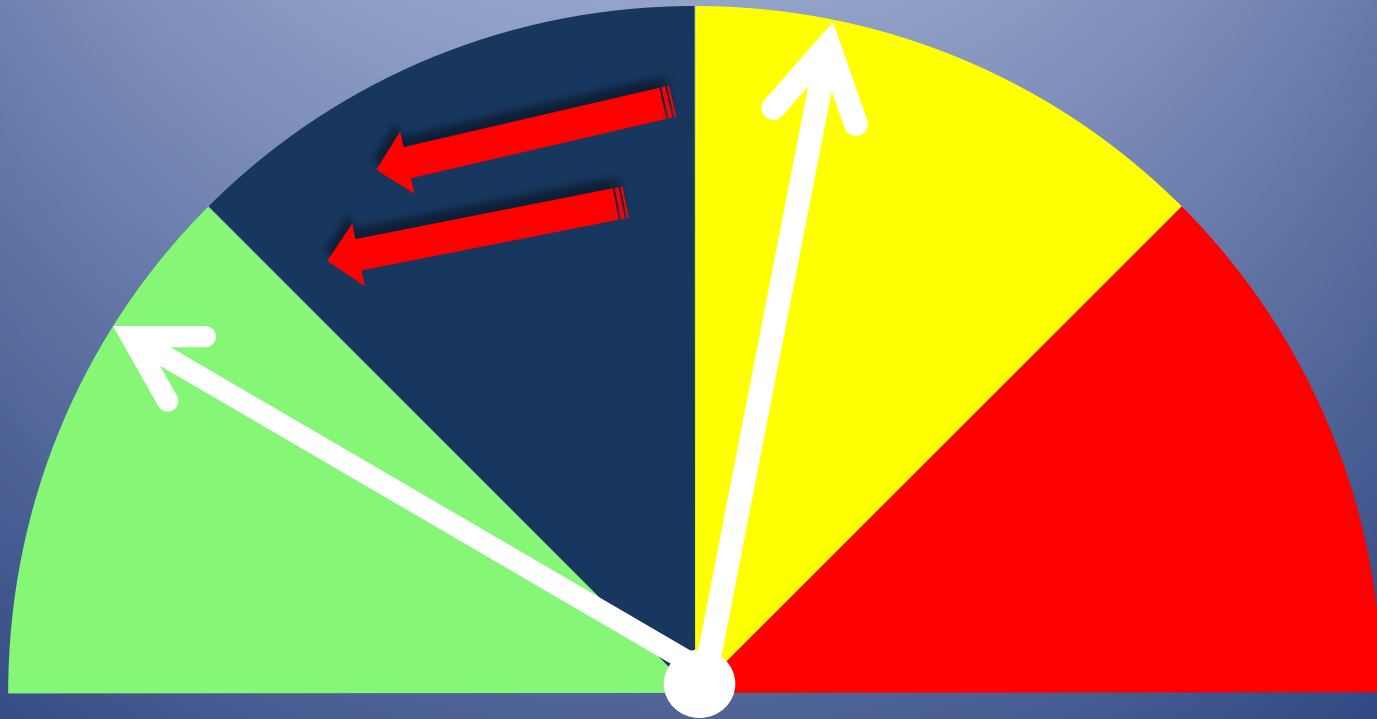
1. Project leader is in place and coordinating actions.
2. Simulations are identifying areas for improving wildfire response.
3. Workshops and outreach on biomass feasibility reaching many partners and interested parties.
4. Additional fuels management projects leveraged and focused on CWS.
5. Border areas raised as top priority for fuels management focus.
6. Connections made with collaboratives for restoration and forest management within a context of CWS.
7. Summit meeting this month to continue raising awareness.

# Challenges...

- 1. Prioritizing CWS actions into an already overflowing existing workload**
- 2. Engaging all partners in a significant way in CWS efforts**
- 3. Matching raised expectations with limited CWS funds**
- 4. Fire by its nature in this geo-region creates conflict**

# Northern Blue Mountain | Cohesive Wildfire Strategy Pilot

*Together, improving our readiness to respond to fire, and to create fire adapted communities and resilient landscapes.*



Excellent  Good  Fair  Poor 